

POWER-LOCK FASTENER

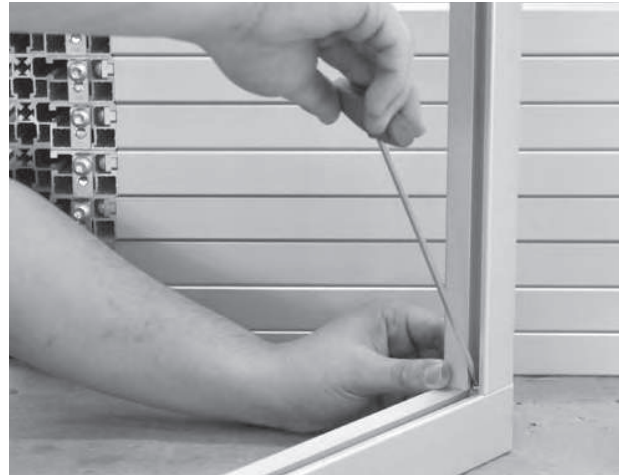
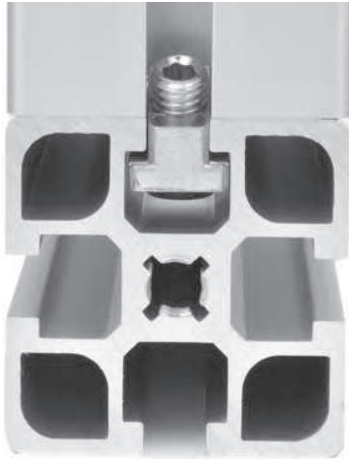
PROFILE CONNECTION WITHOUT MACHINING



Profilex s.a.

6b, Z.I. In den Allern
L-9911 Troisvierges
Phone LU : +352 99 89 06
Phone BE : +32 28 88 16 29
Fax : +352 26 95 73 73

info@profilex-systems.com
www.profilex-systems.com



Due to recent studies there is much optimization potential especially in connection technology for profile systems. The connection must be seen as a complete system.

The total cost of a connection is composed of a number of factors:

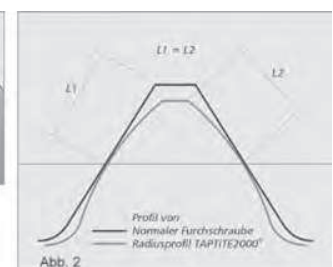
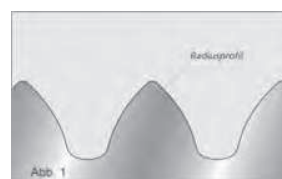
- Design and dimensioning of bores and threads
- Providing equipment and devices
- Procurement and management of drilling and threading tools
- Work Preparation
- Working time for drilling, threading
- Internal transport

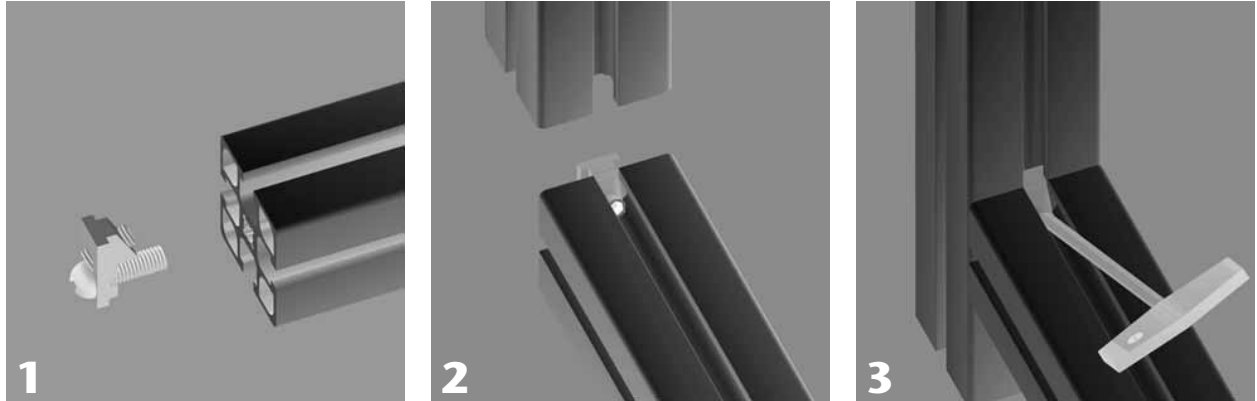
The decisive factor in this consideration is not the cost of the individual connectors. Fundamental cost factor is working time - both in design, production planning and workshop.

MiniTec power-lock fastener 45 SF

Apart from the cost and time advantage the MiniTec profile connector has numerous other benefits such as post-adjustability, ESD performance, ergonomic design and optical benefits. With self-tapping screws the MiniTec power-lock fastener has become even faster. The fastener is simply screwed on to the front side of the profile with the screw. With a standard cordless screwdriver this whole process takes a maximum of 3 seconds. There is no preparation for drilling, tapping, measuring or planning required.

Not only the economic superiority speaks for the MiniTec connector with self-tapping screw. Thanks to the trilobular socket shape combined with the radial profile shape of the thread flanks the new screws have low friction moments. The radial profile shape causes only little material displacement and reduces the amount of shaping work. Thus, the forming torque is lowered by up to 50%. This ensures controlled assembly and higher clamping forces with less clamping force scattering.





Easy three-step-assembly

ASSEMBLY

- 1 Slightly tighten pressure piece with screw M8 x 25 on the front side of the profile
- 2 Push profile 2 with its groove beneath the edges of the pressure piece until the desired position is reached
- 3 Tighten set screw M8 with hex screwdriver SW4.
Recommended tightening torque approximately 12 Nm

ADVANTAGES

- The corners of the profile connection remain free for panel elements
- The joint is invisible from the outside
- Secured against rotation
- Load capacity: 6000 N (UL Profile: 4000N)
- Cross connections can be easily implemented
- The compound is electrically conductive
- Ergonomically optimized

NAME	PART NO.	DESCRIPTION
Power-Lock fastener 45	21.1018/0	with filister screw M8/SW5
Power-Lock fastener 45 SF	21.0818/0	with self-tapping Torx screw M8/T40
Power-Lock fastener 45 H	21.1018/1	Cylindrical screw M8/SW5, Corrosion resistant version for use in corrosive environments
Power-Lock fastener 45 SF short	21.0020/0	with self-tapping Torx screw M8/T40, for profile connections with flush end cap
Power-Lock fastener 30	21.0014/0	with filister screw M8/SW5
Power-Lock fastener 30 SF	21.0016/0	with self-tapping Torx screw M8/T40
Power-Lock fastener 30 SF ESD	21.0037/0	with self-tapping Torx screw M8/T40



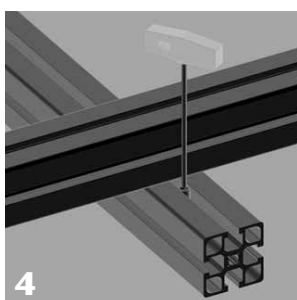
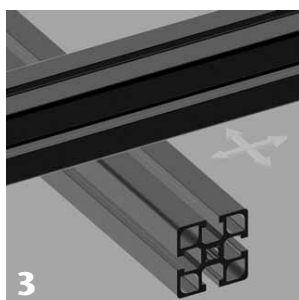
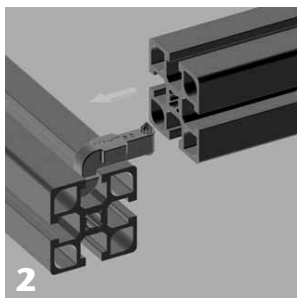
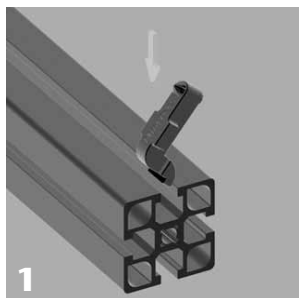
Impuls wrench part no. 26.0800/0
for joint-friendly work.

CROSS-CONNECTOR

FRICITIONAL CONNECTION OF INTERSECTING PROFILES WITHOUT MACHINING



Both profiles are adjustable in direction of the groove. Particularly suitable for the attachment of linear axes LR / LB to machine frames.



ASSEMBLY

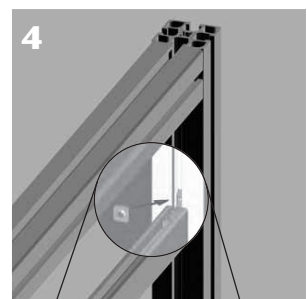
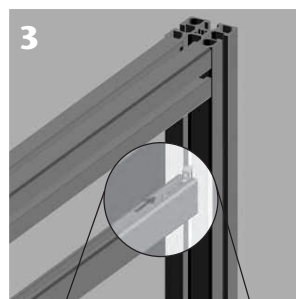
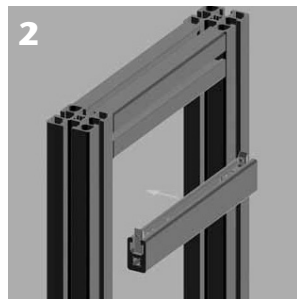
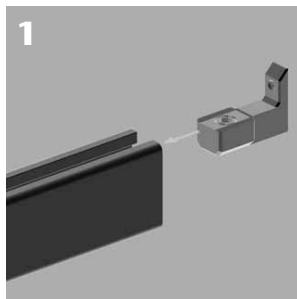
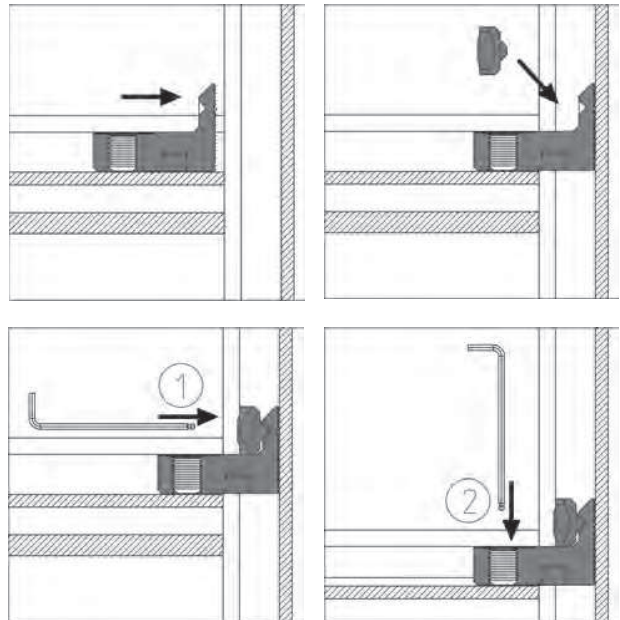
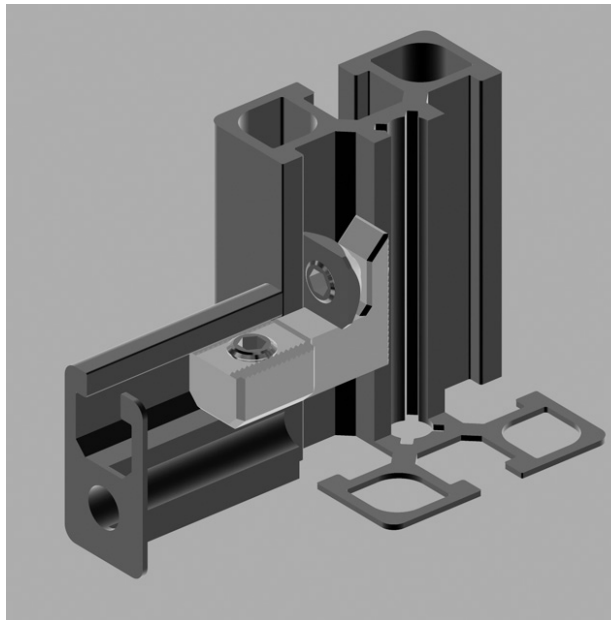
- 1 Swivel the connector into any existing base frame
- 2 Insert the profile to be connected over the connector
- 3 Position the brace profile
- 4 Tighten the set screw in the connector with a torque of 10 Nm



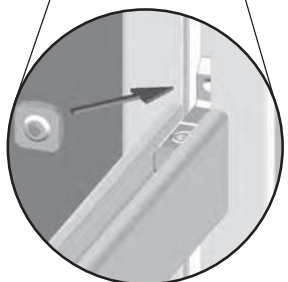
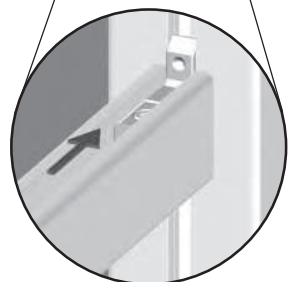
Slightly grease profiles at the contact points to avoid noise due to vibration.

POWER-LOCK FASTENER N

FOR SUBSEQUENT FITTING OF PROFILES INTO EXISTING FRAMES WITHOUT MACHINING

**ASSEMBLY**

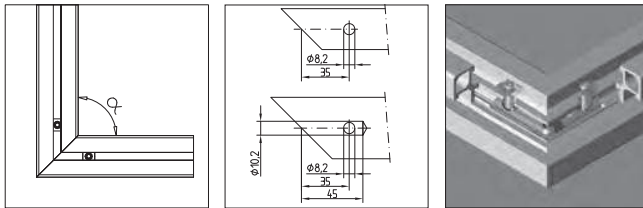
- 1** Insert Power-lock fastener N into profile
- 2** Set profile in the required position
- 3** Insert fastener in the existing profile
- 4** Slide nut over the L-shape end of the fastener and tighten with hex-key. Then tighten set screw (both 10 Nm).



MITRE CONNECTIONS

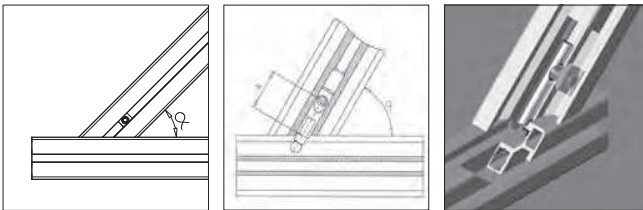
CONSTRUCTIONS WITH HIGH VISUAL DEMANDS

Mitre connections are used for high visual requirements on design. It should be noted that the capacity of these compounds are less than standard connectors. For heavily loaded structures mitre connections should not be used!



Mitre connector

for front side connection of profiles at any angle of 30° to 180°



Mitre connector N

for connecting profiles with the grooves of continuous profiles at any angle of 30° to 90°

NAME	PART NO.	DESCRIPTION
Mitre connector 45 for profiles series 30	21.1400/0	Drill Ø 10.2 mm bore in the profile core bore. Drill Ø 8.2 bore at the distance 36.5 mm from the profile end. Insert the mitre connector in both open profile ends, position the M8 square nut with the set screw, and tighten it.
Mitre connector 30 for profiles series 30	21.1890/0	Core bore needs no machining. Other installation steps like mitre connector 45.
Mitre connector N 45 for profiles series 45	21.1401/0	Drill Ø 10.2 mm bore in the profile core bore. Drill Ø 8.2 bore depending on the angle and at distance A from the profile end (see table). Insert the mitre connector in the open profile end, position the M8 square nut with the set screw and tighten it.
Mitre connector N 30 for profiles series 45	21.0945/0	Core bore needs no machining. Other installation steps like mitre connector N 45.



Drilling jig part no. 26.1050/0 for mitre connector 45
 Drilling jig part no. 26.1060/0 for mitre connector N45
 Drilling jig part no. 26.1063/0 for mitre connector 30
 Drilling jig part no. 26.1056/0 for mitre connector N30

Drilling jig for mitre connector N

Distance A (position of the lateral bore of the threaded pin) depends on the mitre angle. The exact amount is to be taken from the middle bore core drilling of the mitred profile to the middle of the drilling. To safely exclude dimensional errors and ensure the correct functioning of the connection, we recommend the use of our drilling jig for mitre connector N, part no. 26.1060/0.

Distances for common angles:

α	30°	35°	40°	45°	50°	55°	60°	65°	70°	75°	80°	85°	90°
A(mm)	21,0	22,9	24,8	25,9	27,0	27,6	28,2	28,6	29,0	29,2	29,4	29,45	29,5



Mitre connection N

Drilling jig for mitre connector

Distance A (position of the lateral bore of the threaded pin) for front-side connection of profiles is consistently 35 mm. The exact amount is to be taken from the middle bore core drilling of the mitred profile to the middle of the drilling. To safely exclude dimensional errors and ensure the correct functioning of the connection, we recommend the use of our drilling jig for mitre connector.



Use of MiniTec drilling jigs

Slide jig in central bore of the mitred profile to the stopper. Tighten with screw. Insert into profile with bore through the drilling guide inside the fixing screw.

BOLT AND BUTT FASTENER

SUBSEQUENT ASSEMBLY OF PROFILES INTO EXISTING FRAMES, EXTENSION OF PROFILES.

Bolt fastener

To compensate for the reduced capacity compared to our standard connector, bolt connectors should always be used in pairs. Note the weakening of the profile cross section.

Another criterion is the precise form of the connection bore. Deviations from the circular shape lead to reduction in the bearing surface of the connector. It is therefore necessary to process the connection bore on a milling machine.

This connection is not suitable for structures with air supply inside the profile (e.g. pneumatic applications)

Butt fastener

The processing of the profiles corresponds to processing for the bolt connectors. For the profile extension we recommend a combination of butt connectors and mounting strips made of steel.

Application

For rectangular connection of profiles

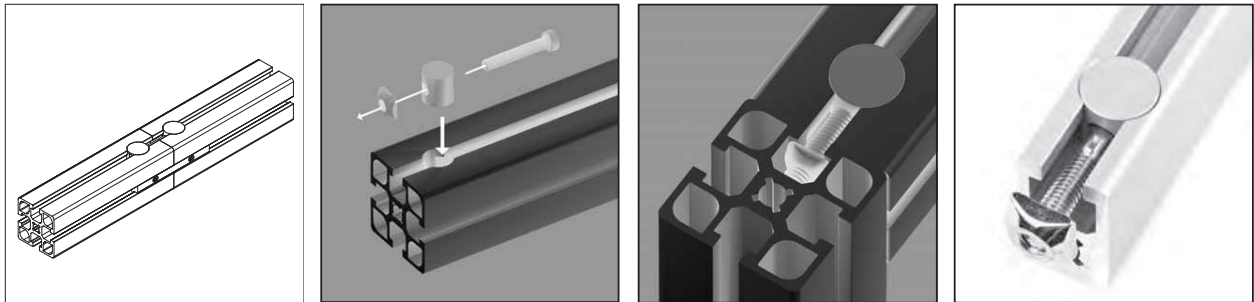
- Subsequent mounting of profiles into existing frames.
- Adjustable
- Extension of profiles

Processing

Step drilling $\varnothing 7 / \varnothing 20$ mm, resp. $\varnothing 9 / \varnothing 15$ mm depth: 16 mm, position: middle of the groove, 20 mm from profile end. Use drilling jig for positioning.

- 1 Insert hex screw M8 x 35 in bolt and – if possible – preassemble square nut into second profile
- 2 Insert bolt in step drilling and connect with square nut.
- 3 Pretighten with ball-headed key 5 A/F.
Final tightening with L-key 5 A/F.

- Recommended locking torque: 15 Nm
- Static load: 3500 N



NAME	PART NO.	DESCRIPTION
Bolt fastener 15	21.1024/0	For profile series 32 and narrow side 19 9x15 stepped bore, 16 mm deep, 22.5 mm from the end of profile
Bolt fastener 20	21.1021/0	For profile series 45 7x20 stepped bore, 16 mm deep, 22.5 mm from the end of profile
Butt fastener 20	21.1020/0	For profile series 45 7x20 stepped bore, 16 mm deep, 22.5 mm from both ends of profile



Drilling jig part no. 26.1092/0 for correct position of the stepped bore

SCREW CONNECTION

FORM-LOCKING CONNECTIONS WHICH MUST BE SECURED AGAINST DISLOCATION.

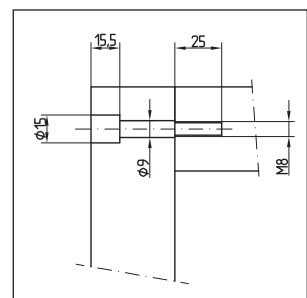
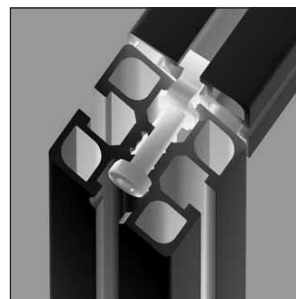
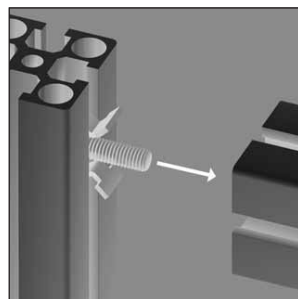
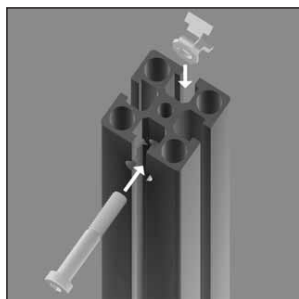
**Application**

- Constructions with high dynamic loads

Processing

Thread M8; step drilling $\text{Ø } 9 / \text{Ø } 15$ mm with drilling jig
Part no. 26.1092/0 for insert screw M8 x 50

- Position anti-twist lock in the groove
- Push the screw through anti-twist lock
- Screw in and tighten the screw into threaded connection profile
- Recommended locking torque: 20 Nm
- Static load: 18000 N



Stepped bore

TIP

Drilling jig part no. 26.1092/0
for correct position of stepped bore

MOUNTING ANGLES

EASY INSTALLATION WITHOUT MACHINING



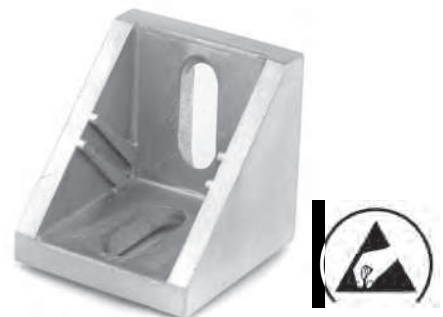
Angle aluminum die casting, powder coated, grey

- No processing
- retrofitting of profiles possible
- adjustable



Optional with cover

- Caps made of oil resistant ABS, grey



ESD version

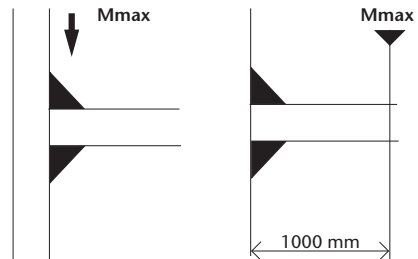
- without powder coating
- with ESD square nuts Z

Assembly

- Use mounting material from fastening kit.

LOAD CAPACITY

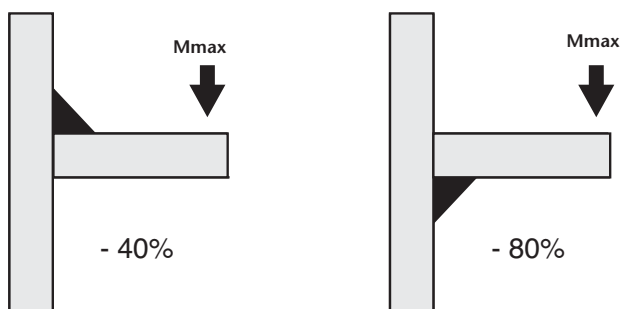
ANGLE	NUMBER OF SCREWS	Mmax (N)	Mmax (Nm)
Angle 19	2	3.600	280
Angle 25	2	3.600	280
Angle 45	2	3.600	280
Angle 45x90	4	7.200	560
Angle 90	8	14.400	1.120



All values include double safety.

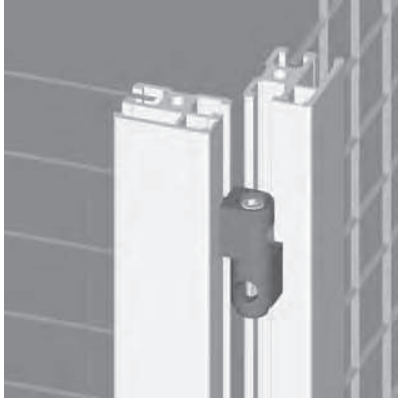
These values are valid only for angles mounted in pairs

If used one-sided, the load reduces as follows:

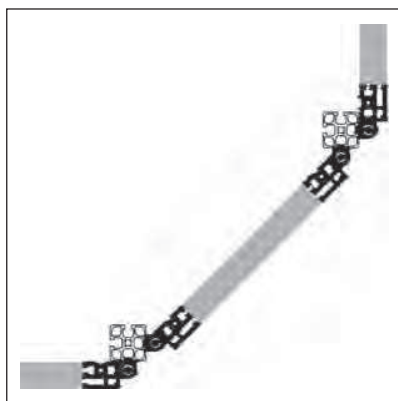
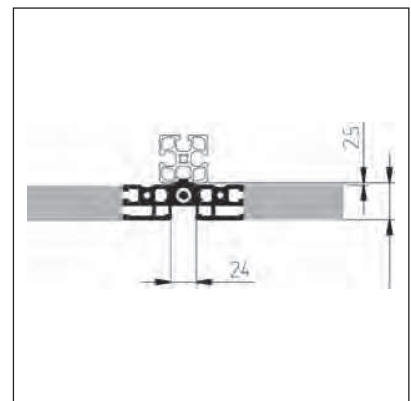
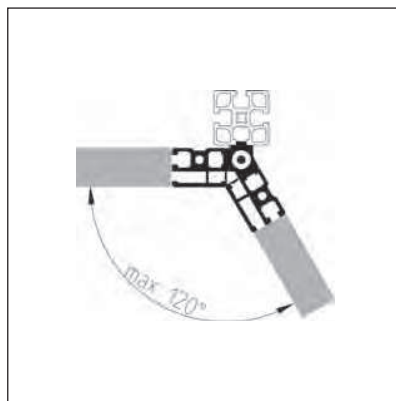
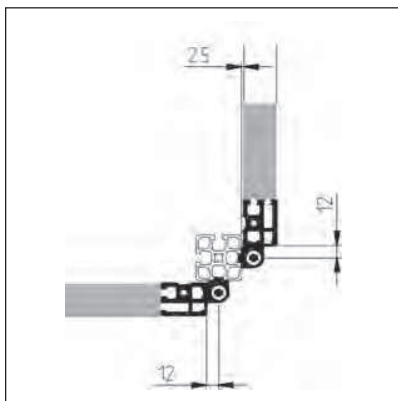


PROTECTIVE FIELD SUSPENSION, ADJUSTABLE ANGLE

CONNECTING PROTECTION FIELDS



MOUNTING POSSIBILITIES



SCREWS

OTHER STANDARDS AND DIMENSIONS ARE AVAILABLE ON REQUEST

CYLINDRICAL SCREWS

M8 with flat head and hexagon socket



THREAD	GALVANIZED	STAINLESS
M08 x 12	21.1264/0	
M08 x 16	21.1200/0	21.1200/1
M08 x 18	21.1268/0	
M08 x 20	21.1202/0	21.1202/2
M08 x 22	21.1280/0	21.2017/0
M08 x 24	21.1269/0	
M08 x 25	21.1204/0	21.1204/1
M08 x 30	21.1206/0	21.1206/1
M08 x 35	21.1208/0	21.1208/1
M08 x 40	21.1210/0	21.1210/1
M08 x 45	21.1211/0	
M08 x 50	21.1212/0	21.1212/1
M08 x 55	21.1877/0	
M08 x 60	21.1214/0	
M08 x 65	21.1299/0	
M08 x 70	21.1282/0	
M08 x 75	21.1392/0	
M08 x 80	21.1225/0	
M08 x 90	21.1226/0	
M08 x 100	21.1662/0	

M6 with flat head and hexagon socket

THREAD	GALVANIZED	STAINLESS
M06 x 12	21.1143/0	21.1143/1
M06 x 14	21.1367/0	
M06 x 16	21.1238/0	21.1238/1
M06 x 18	21.1239/0	
M06 x 20	21.1240/0	21.1340/1
M06 x 22	21.1265/0	
M06 x 25	21.1242/0	21.1242/1
M06 x 30	21.1243/0	21.1243/1
M06 x 35	21.1245/0	21.1693/0
M06 x 40	21.1247/0	21.1247/1
M06 x 45	21.1172/0	
M06 x 50	21.1171/0	21.1171/1
M06 x 55	21.1248/0	21.1248/1
M06 x 60	21.1154/0	
M06 x 65	21.1868/0	
M06 x 70	21.1591/0	

M5 with flat head and hexagon socket

THREAD	GALVANIZED	STAINLESS
M05 x 08	21.1193/0	
M05 x 10	21.1279/0	
M05 x 12	21.1220/0	21.1220/1
M05 x 16	21.1235/0	
M05 x 20	21.1222/0	
M05 x 25	21.1224/0	21.1224/1
M05 x 30	21.1237/0	21.1237/1
M05 x 35	21.2195/0	
M05 x 40	21.1284/0	21.1284/1
M05 x 45	21.1219/0	
M05 x 50	21.1691/0	
M05 x 55	21.1353/0	

COUNTERSUNK SCREWS

M8 with hexagon socket



THREAD	GALVANIZED	STAINLESS
M08 x 10	21.1552/0	21.1550/0
M08 x 12	21.1263/0	
M08 x 16	21.1513/0	21.1513/1
M08 x 20	21.1514/0	21.1514/1
M08 x 25	21.1520/0	
M08 x 30	21.1516/0	
M08 x 35	21.1947/0	
M08 x 40	21.1547/0	
M08 x 45	21.1645/0	
M08 x 50	21.1517/0	21.1517/1
M08 x 55	21.1546/0	
M08 x 60	21.1523/0	
M08 x 65	21.1949/0	
M08 x 70	21.1950/0	
M08 x 90	21.1946/0	

M6 with hexagon socket

THREAD	GALVANIZED	STAINLESS
M06 x 10	21.2219/0	21.2219/1
M06 x 12	21.1518/0	
M06 x 16	21.1506/0	21.1506/1
M06 x 20	21.1507/0	
M06 x 25	21.1566/0	
M06 x 30	21.1508/0	
M06 x 35	21.1509/0	
M06 x 40	21.1510/0	
M06 x 45	21.1951/0	
M06 x 50		21.2236/1
M06 x 55	21.1511/0	
M06 x 60	21.1512/0	
M06 x 65	21.2156/0	
M06 x 70	21.2134/0	

M5 with hexagon socket

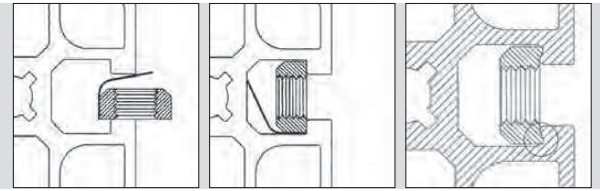
THREAD	GALVANIZED	STAINLESS
M05 x 10	21.1532/0	
M05 x 12	21.1543/0	21.1595/0
M05 x 14	21.1519/0	
M05 x 16	21.1503/0	21.1503/1
M05 x 18	21.1537/0	
M05 x 20	21.1504/0	
M05 x 25	21.1505/0	
M05 x 30	21.1482/0	
M05 x 35	21.2215/0	
M05 x 40	21.2127/0	
M05 x 45	21.1945/0	21.1945/1
M05 x 50	21.2123/0	

M4 with hexagon socket

THREAD	GALVANIZED	STAINLESS
M04 x 08	21.1500/0	
M04 x 10	21.1557/0	
M04 x 12	21.1948/0	
M04 x 16	21.1501/0	21.1501/1
M04 x 20	21.1502/0	
M04 x 25	21.1571/0	
M04 x 30	21.1203/0	

SQUARE NUTS, RHOMBUS NUTS AND SQUARE WASHERS

AVAILABLE FOR M3, M4, M5, M6 AND M8



with position-fixing

ESD conductive



Square nut M5 for profile series MINI

THREAD	GALVANIZED	STAINLESS
M5 x 08	21.1382/0	-



Square nut 30 with position-fixing

THREAD	GALVANIZED	STAINLESS
M8	21.1570/0	-
M6	21.1569/0	-
M5	21.1568/0	-
M4	21.1567/0	-

Square nuts can be pivoted at any point in the profile. When used in the vertical profile apply square nut with position-fixing. Can be pivoted like the standard square nut; the position-fixing holds the nut in the desired position.

Use square nuts M6 and M8 Z for ESD applications.

Square nuts

THREAD	GALVANIZED	STAINLESS
M8	21.1351/0	21.1351/1
M6	21.1330/0	21.1330/1
M5	21.1320/0	21.1320/1
M4	21.1310/0	21.1310/1
M3	21.1309/0	21.1309/1

Square nuts with position-fixing

THREAD	GALVANIZED	STAINLESS
M8	21.1351/2	21.1351/4
M6	21.1330/2	21.1330/4
M5	21.1320/2	21.1320/4
M4	21.1310/2	21.1310/4
M3	21.1309/2	21.1309/4

Square nut Z, ESD conductive

THREAD	GALVANIZED	STAINLESS
M8	21.1390/0	-
M6	21.1391/0	-
M5	21.1627/0	-

Square nut Z with position-fixing, ESD conductive

THREAD	GALVANIZED	STAINLESS
M8	21.1390/2	-
M6	21.1391/2	-
M5	21.1627/2	-



Square nut M8 L

THREAD	GALVANIZED	STAINLESS
M8	21.1368/0	-



Square nut M8 L with position-fixing

THREAD	GALVANIZED	STAINLESS
M8	21.1368/2	-



Rhombus nut F

(Thread M6 with pitch error for self-locking of screw connection)

THREAD	GALVANIZED	STAINLESS
M6	21.1354/0	-



Square washers

THREAD	GALVANIZED	STAINLESS
Square washer 8	21.1360/0	21.1360/1
Square washer 6	21.1363/0	-
Square washer 5	21.1362/0	-



Hex nut with flange, self-locking

THREAD	GALVANIZED	STAINLESS
M8	21.1334/0	-

SPECIAL SCREWS



Screws for power-lock fasteners

Fillister head screw	GALVANIZED	STAINLESS
M08 x 25	21.1189/0	-
M08 x 25 SF* self-tapping thread	21.1492/0	-



Screws for end caps VA/AL/LR

Flat head screw	GALVANIZED	STAINLESS
M08 x 10	-	21.1666/0

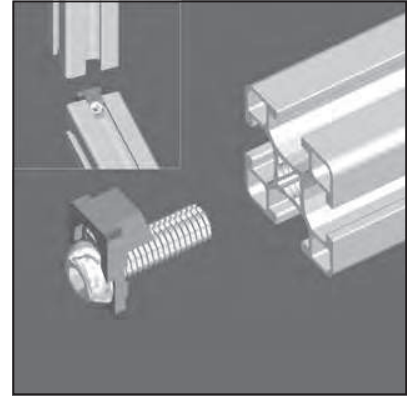
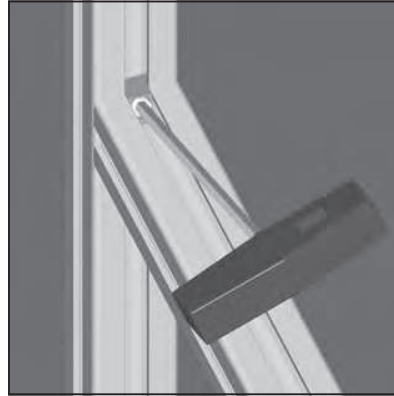
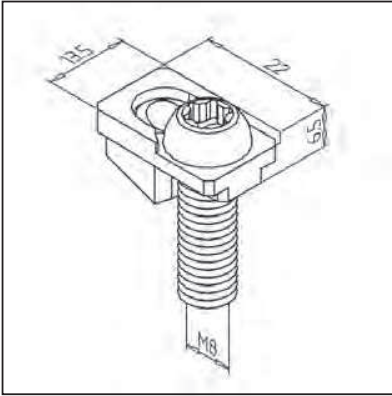


Screws for mounting surface elements

Flat head screw	GALVANIZED	STAINLESS
M06 x 12	21.2074/0	-
M06 x 16	21.1246/0	-
M06 x 20	21.1246/1	-

POWER-LOCK FASTENER 30 SF

part no. 21.0016/0



TECHN. DATA / ITEMS SUPPLIED

- Connecting element steel, zinc plated, chromated
- Self tapping torx screw T40
- Weight 0,020 kg
- **Power-Lock fastener 30 (standard) part no. 21.1014/0** with filister head screw A/F 5
- **Power-Lock fastener 30 SF ESD part no. 21.0037/0** with self - threading torx screw

APPLICATIONS

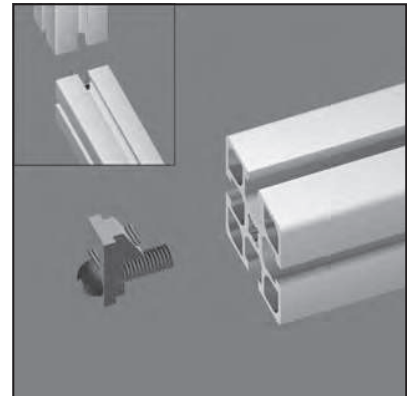
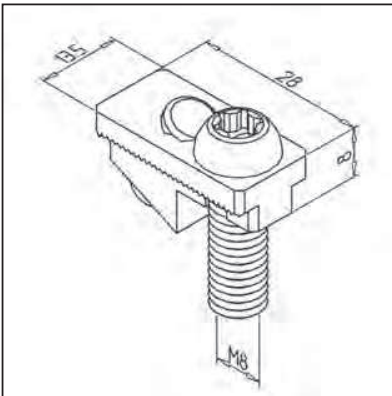
- Power-lock connection of profiles series 30
- Also suitable for cross joints

ASSEMBLY

- Mount fastener by hand onto profile face with torx wrench T40
- Tighten set screw M8 with key A/F 4
- Recommended locking torque: 12 Nm

POWER-LOCK FASTENER 45 SF

part no. 21.0818/0



TECHN. DATA / ITEMS SUPPLIED

- Connecting element steel, zinc plated, chromated
- 1 self tapping screw M8 x 25, galvanized
- Weight 0,029 kg
- **Power-Lock fastener 45 (standard) part no. 21.1018/0** with filister head screw A/F 5
- **Power-Lock fastener 45 H - stainless version part no. 21.1018/1** with cylinder head screw A/F 5

APPLICATIONS

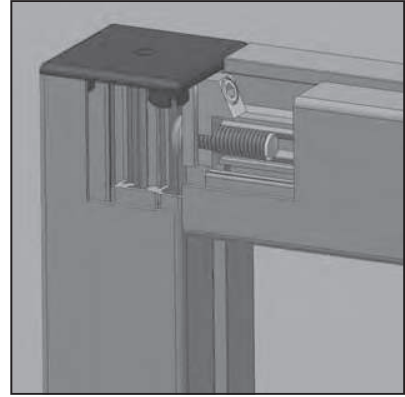
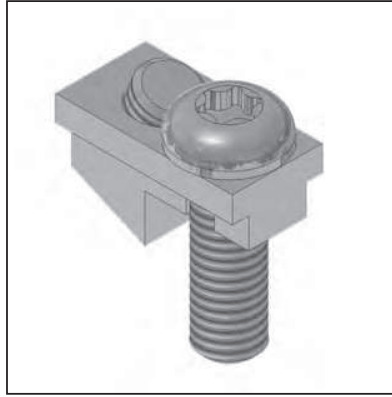
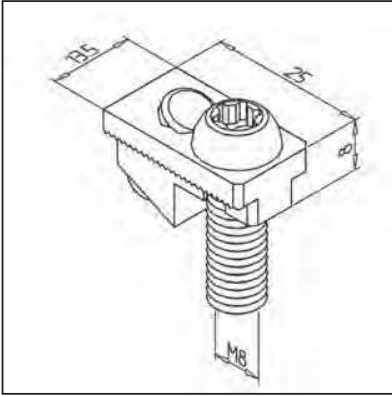
- Power-lock connection for all profiles, also suitable for crossjoints
- For larger profile sections several fasteners can be used
- **part no. 21.1018/0 and 21.0818/0** suitable for ESD applications

ASSEMBLY

- Mount fastener by hand onto profile face with torx wrench T40
- Tighten set screw M8 with key A/F 4
- Recommended locking torque 12 Nm

POWER-LOCK FASTENER 45 SF SHORT

part no. 21.0020/0



TECHN. DATA / ITEMS SUPPLIED

- 1 connecting element steel, zinc plated, chromated
- 1 fillister head screw M8 x 25
- Weight 0,028 kg

APPLICATIONS

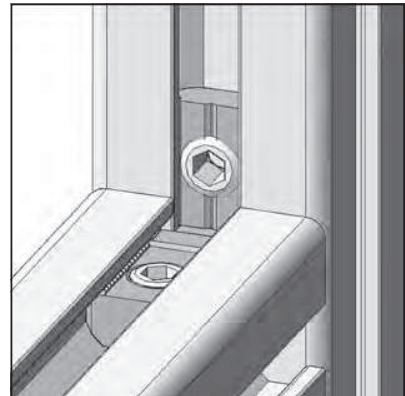
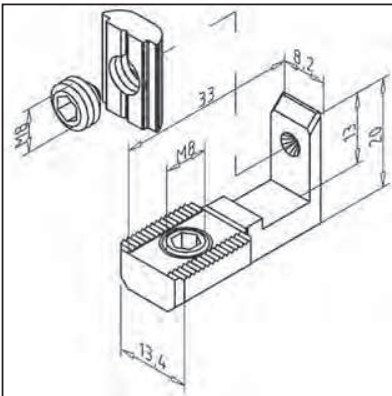
- For the Assembly of profiles with flush end cap

ASSEMBLY

- Mount fastener by hand onto profileface with torx wrench T40
- Tighten set screw M8 with key A/F 4
- Recommended locking torque 12 Nm

POWER-LOCK FASTENER N 30

part no. 21.0033/0



TECHN. DATA / ITEMS SUPPLIED

- 1 connecting element steel, zinc plated, chromated, with set screw M8
- 1 square nut M8 with pre-mounted screw
- Weight 0,025 kg

APPLICATIONS

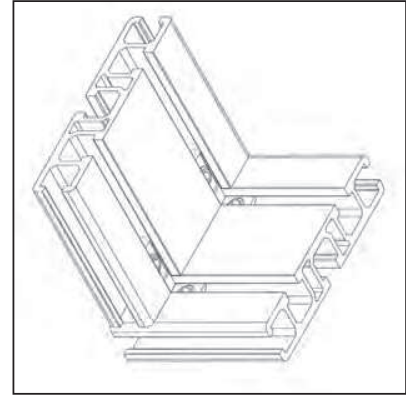
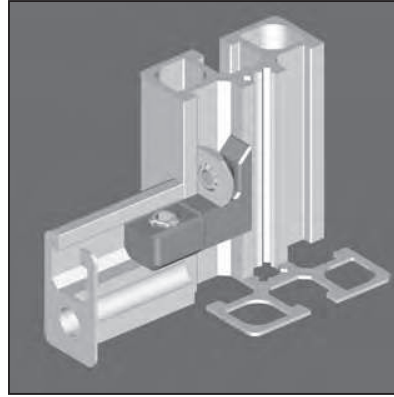
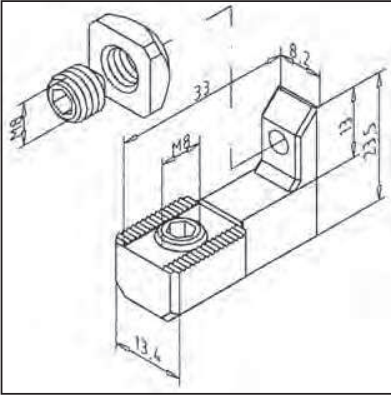
- Power-lock connection of profiles series 30
- Particularly for subsequent insertion of profiles into existing frames

ASSEMBLY

- Set profile with fastener in required position
- Slide square nut over the L-shape end of the fastener and tighten it
- Tighten set screw of fastener
- Recommended torque for both set screws: 10 Nm

POWER-LOCK FASTENER N 45

part no. 21.0918/0



TECHN. DATA / ITEMS SUPPLIED

- 1 connecting element steel, zinc plated, chromated, with set screw M8 x 10
- 1 Nut M8 with set screw M8 x 08
- Weight 0,036 kg/m

APPLICATIONS

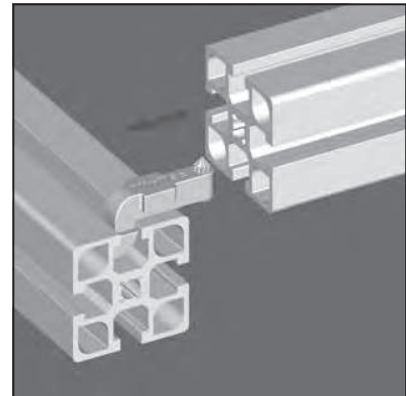
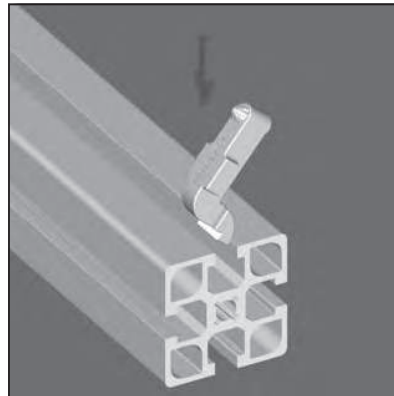
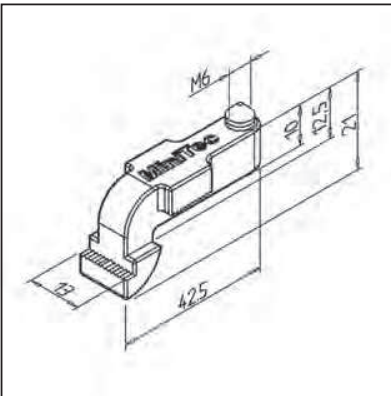
- Connects to all types of profiles
- Particularly for subsequent insertion of profiles into existing frames
- For profile sections bigger than 45 x 45 several fasteners can be used

ASSEMBLY

- Set profile with fasteners in required position
- Slide nut M8 over the L-shape end of the fastener and tighten with hex-key 4 A/F
- Tighten set screw M8 x 10 of fastener
- Recommended torque for both screws: 10 Nm

CROSS-CONNECTOR 45

part no. 21.0006/0



TECHN. DATA / ITEMS SUPPLIED

- 1 connecting element, steel, zinc plated, chromated, with preassembled set screw M6 x 16
- Weight 0,035 kg

APPLICATIONS

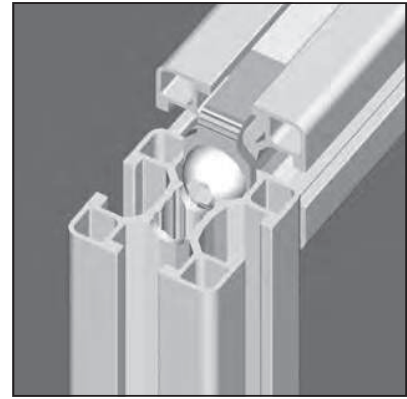
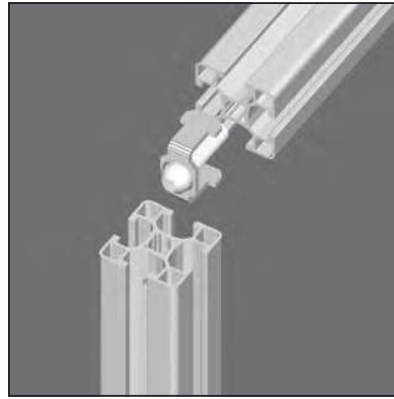
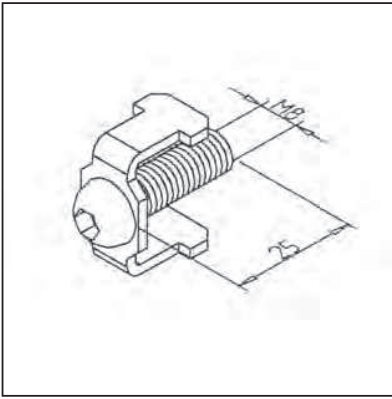
- For connecting all types of profile
- Particularly for subsequent insertion of profiles into existing constructions
- For profile sections bigger than 45 x 45 several fasteners can be used
- Suitable for ESD applications

ASSEMBLY

- Swivel the connector into the existing frame
- Push the new profile over the connector
- Tighten set screw in connector with wrench size 3 to 10 Nm torque

SCREW-CONNECTION 30 N

part no. 21.1385/0



TECHN. DATA / ITEMS SUPPLIED

- Screw M8 x 25, zinc plated
- Locking device steel, zinc plated
- Weight 0,017 kg

APPLICATIONS

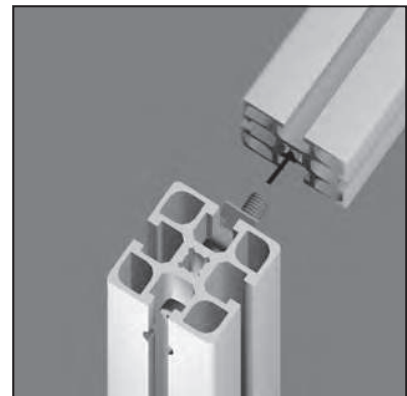
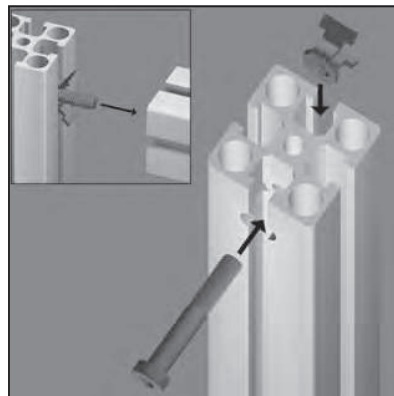
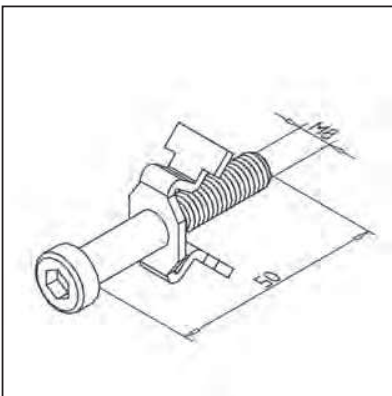
- Connection of profiles

ASSEMBLY

- Form thread M8 x 25 into core bore of the profile to be fixed
- Bore through-hole \varnothing 7 mm into second profile
- Preassemble screw and locking device to Profile 1 attach and insert into the groove by profile 2
- Tighten screw with allen-key through hole \varnothing 7 mm
- Recommended locking torque: 20 Nm

SCREW CONNECTION 45

part no. 21.1017/0



TECHN. DATA / ITEMS SUPPLIED

- Hex socket cap screw M8 x 50, zinc plated
- Locking device: steel, zinc plated
- Weight 0,027 kg

APPLICATIONS

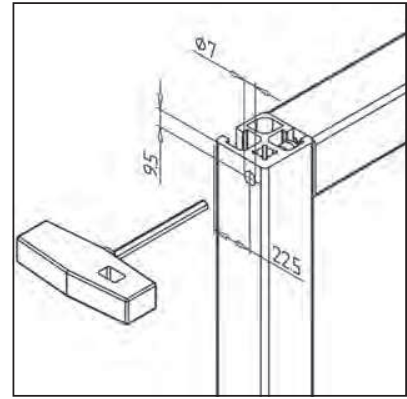
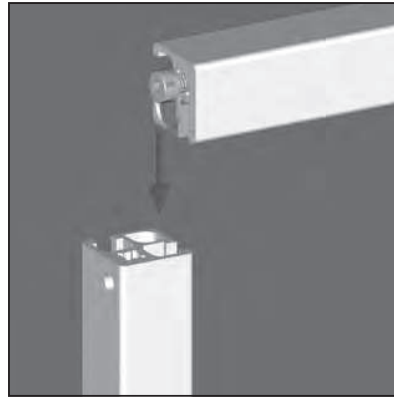
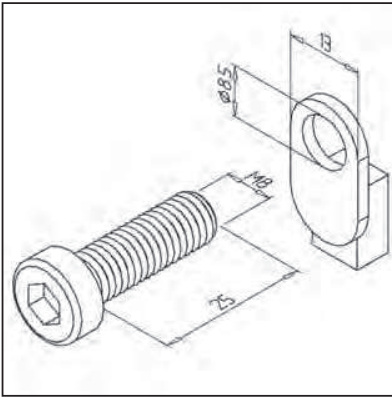
- Profile connections which must be secured against dislocation
- Secure connection all types of profiles

ASSEMBLY

- Form thread M8 x 25 into profile to be fixed
- Bore step-drilling \varnothing 9 x 15 at the position of required connection
- Insert the locking device into the groove and put the screw through the bore of the element
- Tighten the screw
- Recommended locking torque: 20 Nm
- see page 70

SCREW CONNECTION 32

part no. 21.1386/0



TECHN. DATA / ITEMS SUPPLIED

- Hex socket cap screw M8 x 25
- Anti-rotation device AL GD
- Weight 0,015 kg

APPLICATIONS

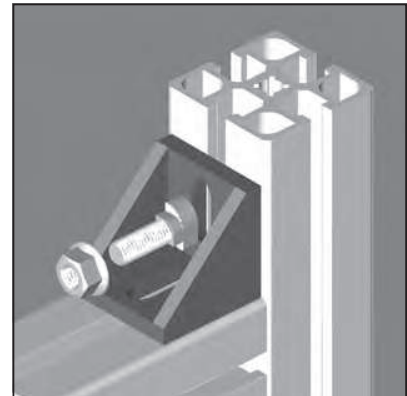
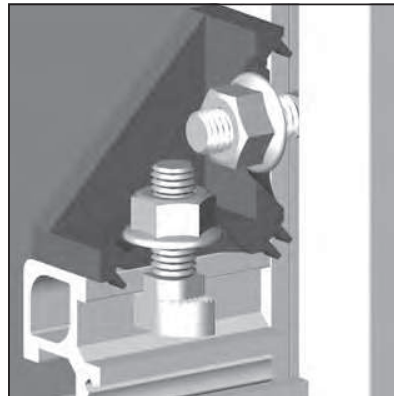
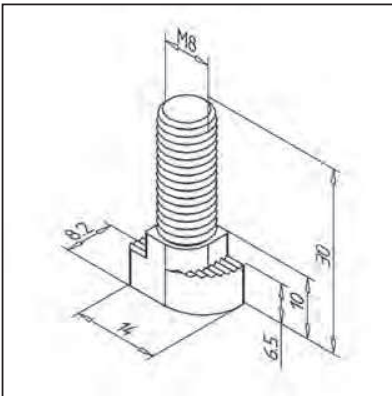
- Connection with effective anti-rotation function for profile series 32 and 19

ASSEMBLY

- Form a thread M8 with thread former
- Drill a through hole bore $\varnothing 7$ in profile 2
- Insert the anti-rotation device in profile 1 and connect with profile 2
- Tighten the screw with recommended locking torque: 20 Nm

HAMMER HEAD SCREW

part no. 21.1370/0



TECHN. DATA / ITEMS SUPPLIED

- Steel, zinc plated
- Weight 0,013 kg

APPLICATIONS

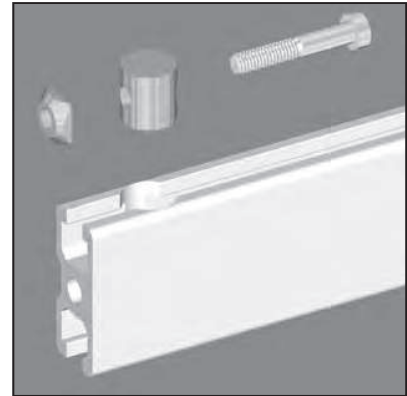
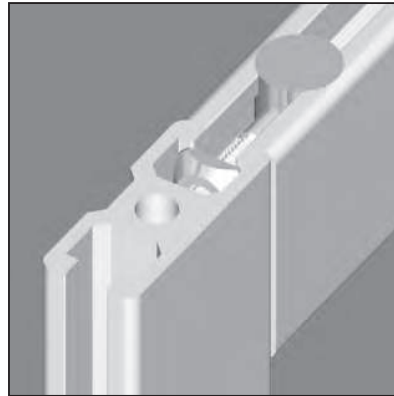
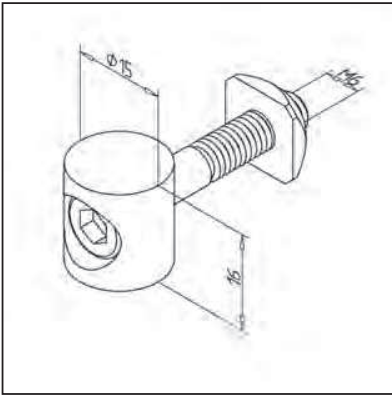
- Simple attachment of add-on parts or accessories on profiles
- Attachment of mounting angle
45 GD 45 x 90 GD-Z **part no. 21.1397/0**
45 GD **part no. 21.1133/0**
45 GD-Z **part no. 21.1349/0**
90 GD-Z **part no. 21.0978/0**

ASSEMBLY

- Insert hammer head screw into profile groove, tighten nut M8
- When tightening the nut, the hammer head will turn crosswise
- **Recommended nut:**
Self-locking flange hex nut **part no. 21.1334/0**

BOLT-FASTENER 15

part no. 21.1024/0



TECHN. DATA / ITEMS SUPPLIED

- 1 bolt aluminium
- Fastening kit
- Weight 0,032 kg

APPLICATIONS

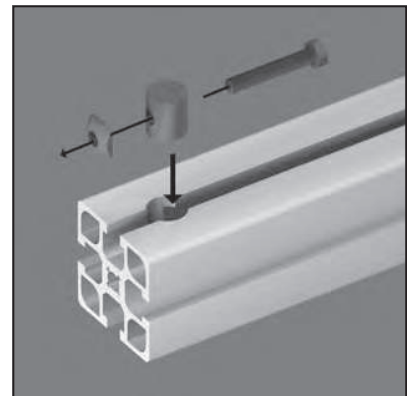
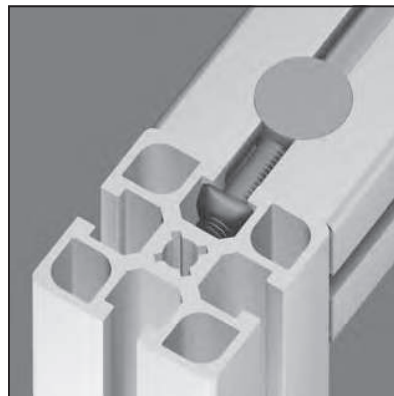
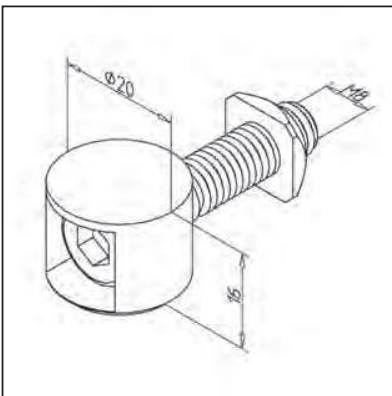
- For connection of profiles 19 and 32
- Particularly for subsequent insertion into existing constructions

ASSEMBLY

- Step drilling $\varnothing 9 \times 15$, depth 16 mm, positioned 22,5 mm from profile end to the middle of the groove
- Insert the bolt into the step drilling and pretighten by using ball-headed key 4 A/F
- Final tightening with L-key
- Recommended locking torque: 15 Nm
- See page 68

BOLT-FASTENER 20

part no. 21.1021/0



TECHN. DATA / ITEMS SUPPLIED

- 1 Bolt GD- Zn
- Fastening kit
- Weight 0,036 kg

APPLICATIONS

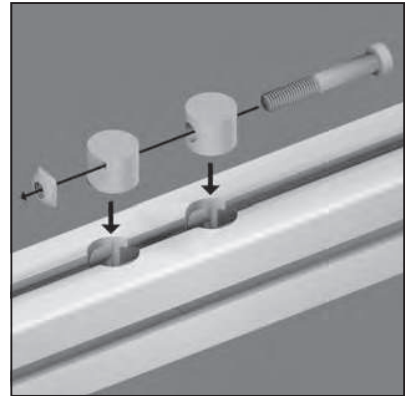
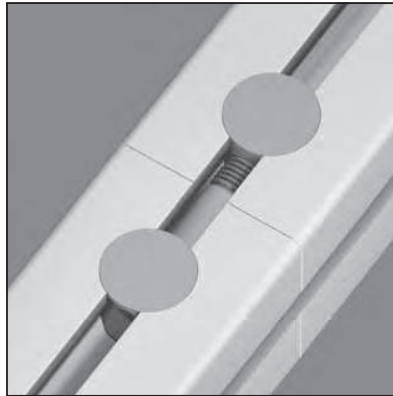
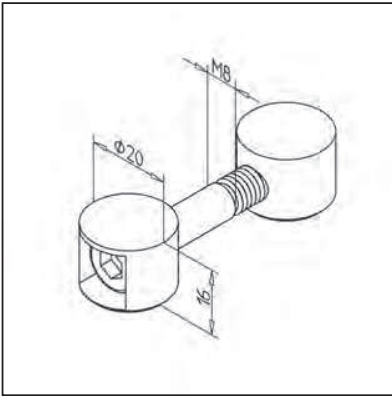
- For connection of all types of profiles
- Particularly for subsequent insertion into existing constructions
- For connection of profile 45 x 19

ASSEMBLY

- Step drilling $\varnothing 7 \times 20$ depth 16 mm, positioned 22,5 mm from profile end to the middle of the groove
- Insert the bolt into the step drilling and pretighten by using ball-headed key 5 A/F
- Final tightening with L-key
- Recommended locking torque: 15 Nm
- See page 68

BUTT FASTENER

part no. 21.1020/0



TECHN. DATA / ITEMS SUPPLIED

- 2 Bolts GD - Zn
- Fastening kit
- Weight 0,056 kg

APPLICATIONS

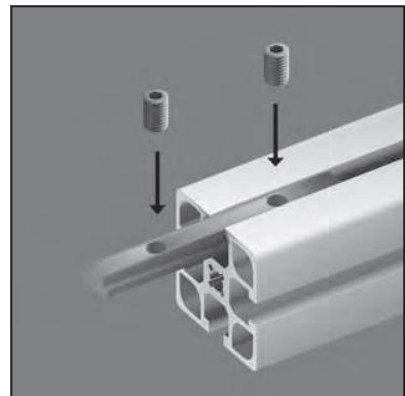
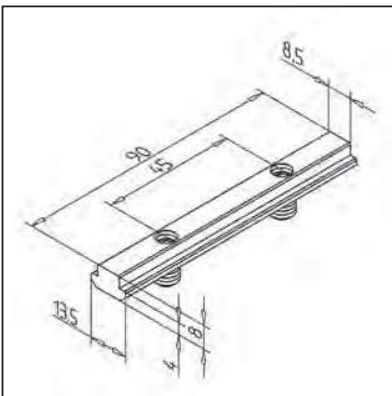
- Profile extension
- Butt connector

ASSEMBLY

- Step drilling $\varnothing 7 \times 20$ depth 16 mm, positioned 22,5 mm from profile end to the middle of the groove
- Insert the fastener and pretighten the screw with a ball-headed key 5 A/F
- Final tightening with L-key
- Recommended tightening torque 15 Nm
- See page 69

T-SLOT BAR 90

part no. 21.1029/0



TECHN. DATA / ITEMS SUPPLIED

- Steel, zinc plated
- 2 set screws M8 x 14, 4 A/F, zinc plated
- Weight 0,062 kg
- **Stainless version part no. 21.0992/0**

APPLICATIONS

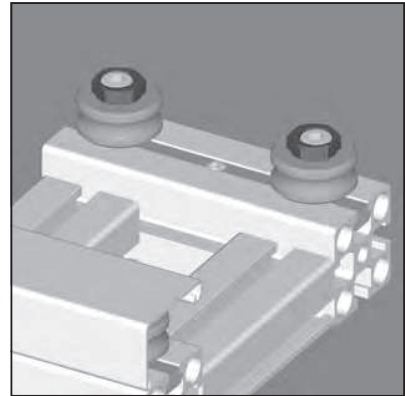
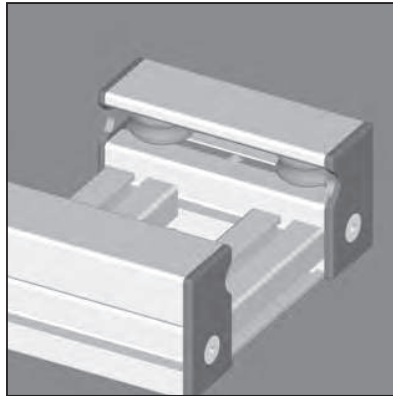
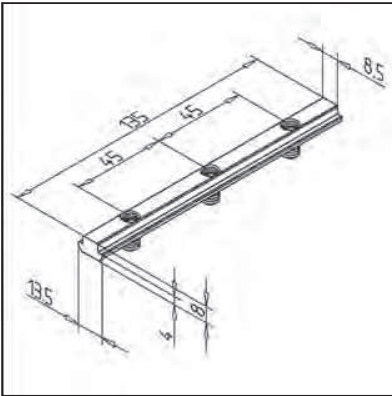
- Profile extension
- Fixing of bearings for linear guides

ASSEMBLY

- Insertion into the profile groove
- Clamp with set screw
- No processing required
- For larger profiles or heavy-duty applications use multiple t-slot bars

T-SLOT BAR 135

part no. 21.0988/0



TECHN. DATA / ITEMS SUPPLIED

- Steel, zinc plated
- 3 set screws M8 x 14, 4 A/F, zinc plated
- Weight 0,094 kg
- **Stainless version part no. 21.0987/0**

APPLICATIONS

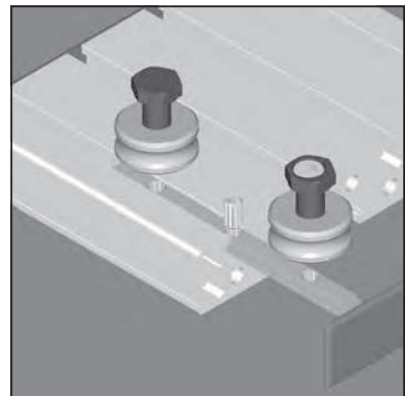
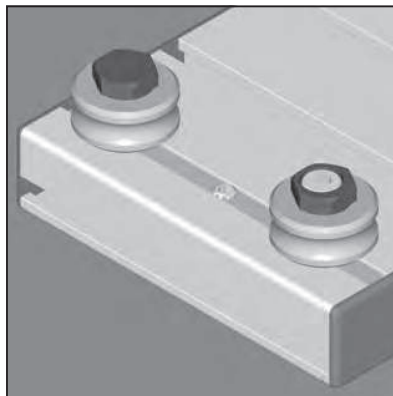
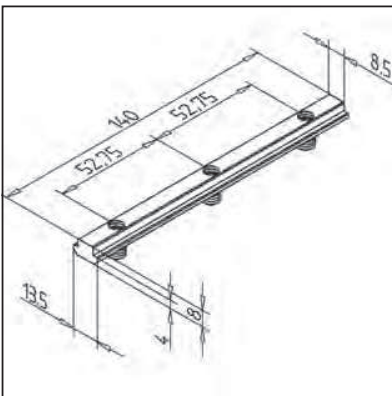
- Fixing of bearings in standard slide LW

ASSEMBLY

- Insertion into the profile groove
- No processing required

T-SLOT BAR 140

part no. 28.0026/0



TECHN. DATA / ITEMS SUPPLIED

- Steel, zinc plated
- 3 set screws M8 with hexagonal A/F 4, zinc plated
- Weight 0,096 kg
- **Stainless version part no. 28.0030/0**

APPLICATIONS

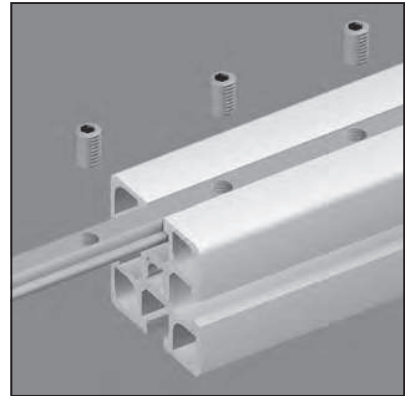
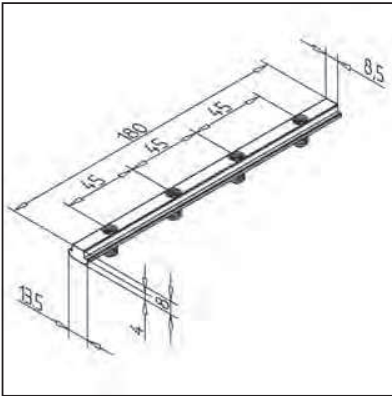
- Fixing of bearings in linear slides LW 32 E

ASSEMBLY

- Insertion into the profile groove
- No processing required

T-SLOT BAR 180

part no. 21.1101/0



TECHN. DATA / ITEMS SUPPLIED

- Steel, zinc plated
- 4 set screws M8 with hexagonal A/F 4, zinc plated
- Weight 0,125 kg
- **Stainless version part no. 21.0986/0**

APPLICATIONS

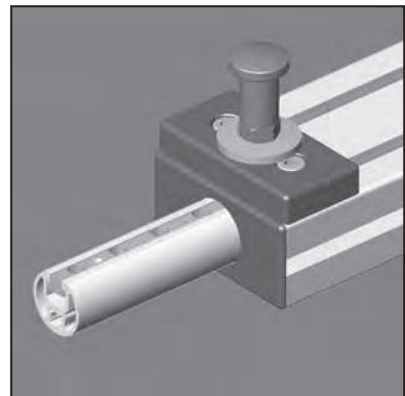
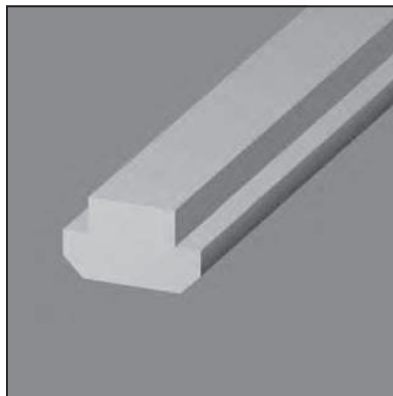
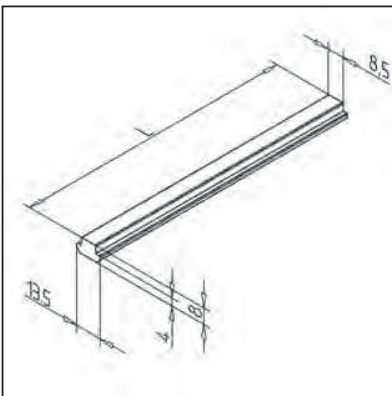
- Face fastening of profiles or ready-for-use elements
- Profile extension
- Fixing of bearings for linear guides

ASSEMBLY

- Insertion into the profile groove
- No processing required
- For larger profiles or heavy - duty applications use multiple t-slot bars

T-SLOT BAR PROFILE

part no. 21.1030/0



TECHN. DATA / ITEMS SUPPLIED

- Steel, plain
- Weight 0,650 kg/m
- Length 3 m
- **Stainless version part no. 21.1030/1**

APPLICATIONS

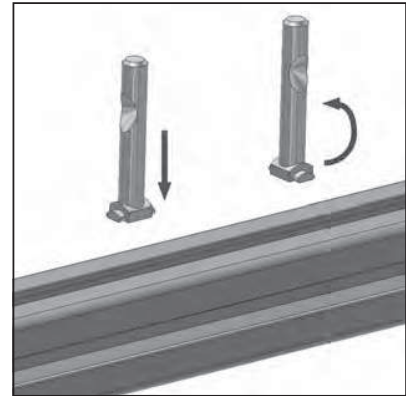
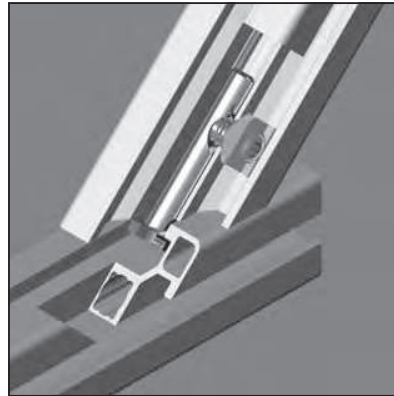
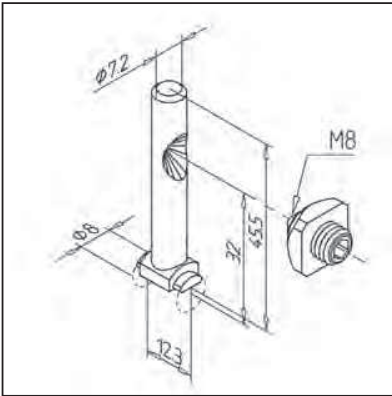
- Production of clamping ledges, connecting elements for special lengths
- Production of reinforcing elements
- Ledges with special perforation

ASSEMBLY

- Insertion into the profile groove

MITRE CONNECTOR N 30

part no. 21.0945/0



TECHN. DATA / ITEMS SUPPLIED

- Steel, zinc plated
- Fastening kit
- Weight 0,022 kg

APPLICATIONS

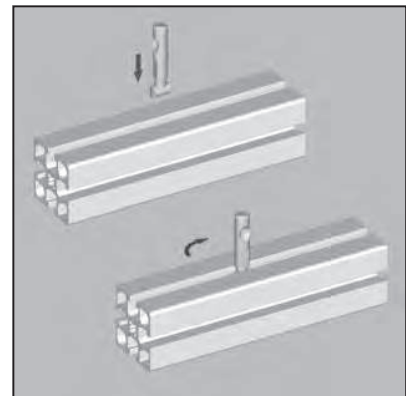
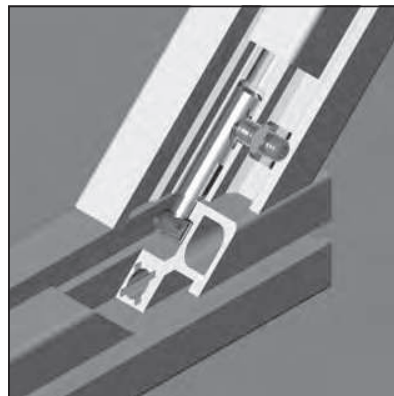
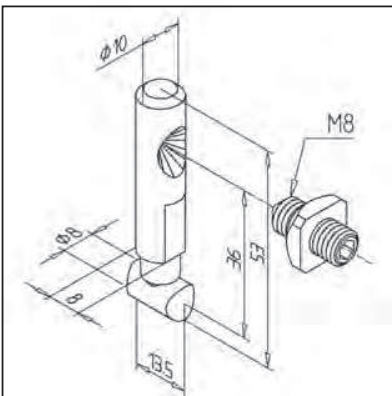
- Mitre connection of profiles on profile groove
- For subsequent fitting in the groove

ASSEMBLY

- Insert mitre connector N 30 into groove and core bore
- Use drilling jig for mitre connector N30 **part no. 26.1056/0**

MITRE CONNECTOR N 45

part no. 21.1401/0



TECHN. DATA / ITEMS SUPPLIED

- Steel, zinc plated
- Fastening kit
- Weight 0,035 kg

APPLICATIONS

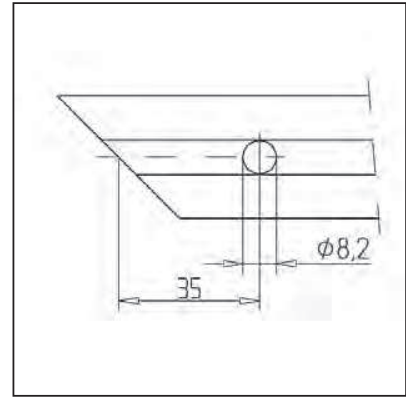
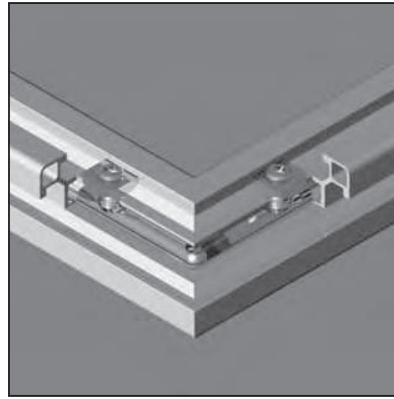
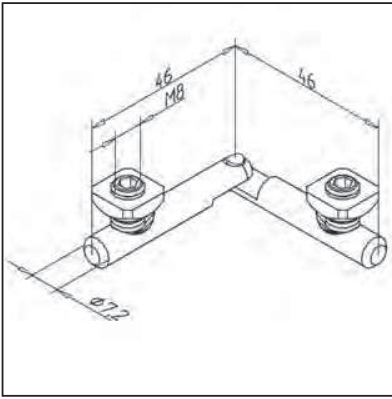
- Mitre connection of profiles on profile groove
- For subsequent fitting in the groove

ASSEMBLY

- Drill \varnothing 10,2 mm bore in the profile core bore
- Alternatively use drilling jig for mitre connector N 45 **part no. 26.1060/0** 597
- see page 597

MITRE CONNECTOR 30

part no. 21.1890/0



TECHN. DATA / ITEMS SUPPLIED

- Steel, zinc plated
- Fastening kit
- Weight 0,040 kg

APPLICATIONS

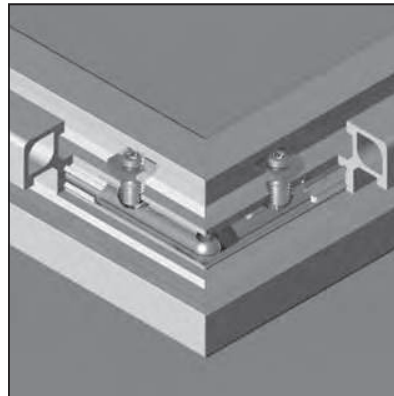
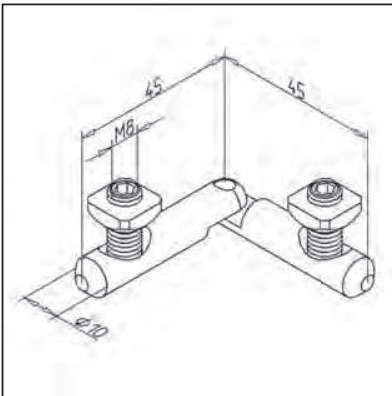
- Show cases
- Exhibition racks
- Displays
- Frames

ASSEMBLY

- Insert mitre connector 30 into both profile ends
- Position square nuts on top of the thread M8; tighten the connector with set screws M8
- Use drilling jig for mitre connector 30 **part no. 26.1063/0**
- see page 597

MITRE CONNECTOR 45

part no. 21.1400/0



TECHN. DATA / ITEMS SUPPLIED

- Steel, zinc plated
- Fastening kit
- Weight 0,065 kg

APPLICATIONS

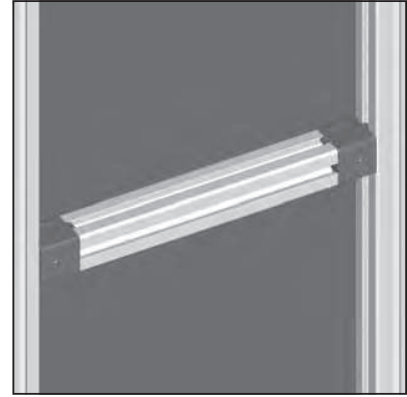
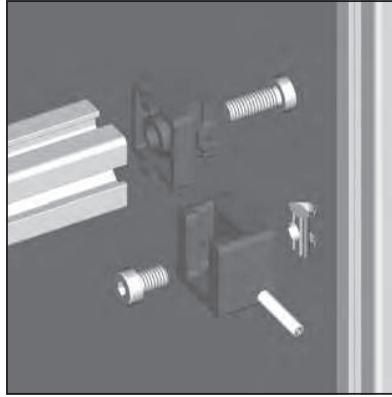
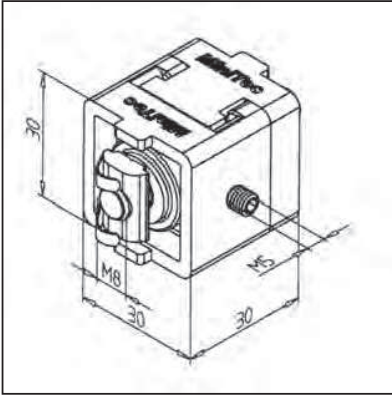
- Show cases
- Exhibition racks
- Displays
- Frames

ASSEMBLY

- Insert the mitre connector into both profile ends
- Position square nuts on top of the thread M8; tighten the connector with set screws M8
- Alternatively use drilling jig for mitre connector 45 **part no. 26.1050/0** see page 597

MOUNTING BRACKET 30

part no. 21.2068/0



TECHN. DATA / ITEMS SUPPLIED

- Polyamide, grey
- Fastening kit, unilateral for cross-tie and upright piece
- Weight 0,041 kg

APPLICATIONS

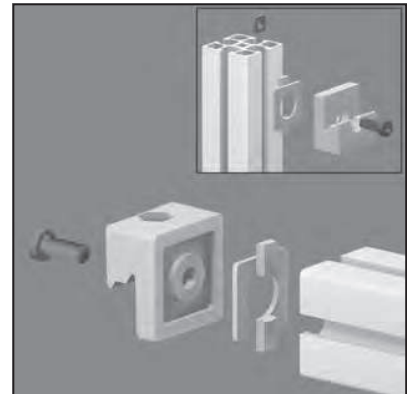
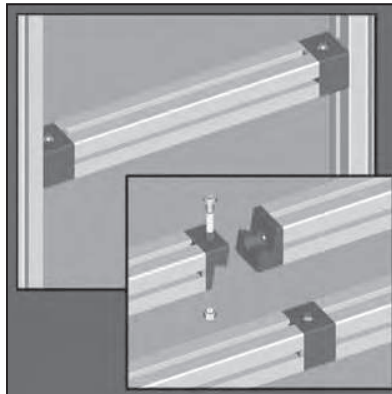
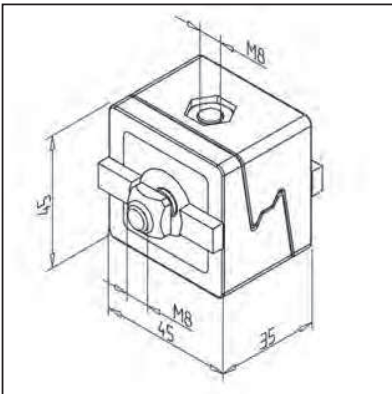
- Connection of profiles
- For subsequent insertion of profiles into existing constructions, relocatable in direction of the groove
- Removable attachments

ASSEMBLY

- Use fastening kit
- Insert cross-tie profile into T-solt
- For adjustment use set screw M5

MOUNTING BRACKET 45

part no. 21.1411/0



TECHN. DATA / ITEMS SUPPLIED

- GD- Zn, powder coated, grey
- Fastening kit
- Weight 0,428 kg

APPLICATIONS

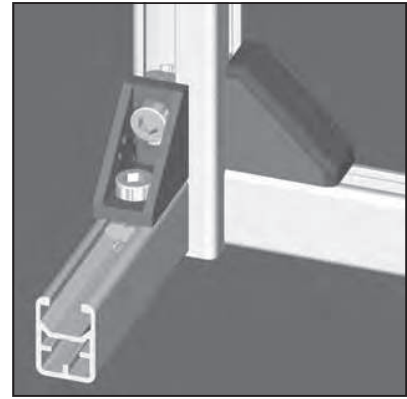
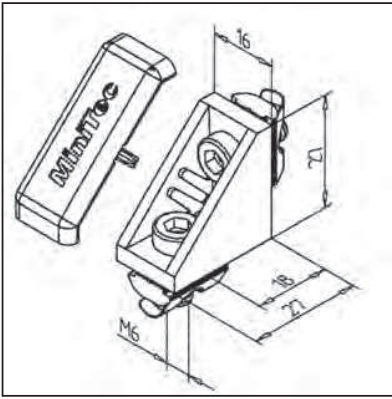
- Connection of profiles
- For subsequent insertion of profiles into existing constructions, relocatable in direction of the groove
- Fixing of support surfaces
- Removable attachments

ASSEMBLY

- Use fastening kit
- In case of mounting into vertical profiles, the use of square-nut M8 with position-fixing **part no. 21.1351/2** is recommended
- Recommended locking torque: 20 Nm

ANGLE 16 GD-Z

part no. 21.2077/0



TECHN. DATA / ITEMS SUPPLIED

- Aluminium GD, powder coated, grey
- Fastening kit
- **Conductive version part no. 21.2077/6**
- Weight 0,038 kg

APPLICATIONS

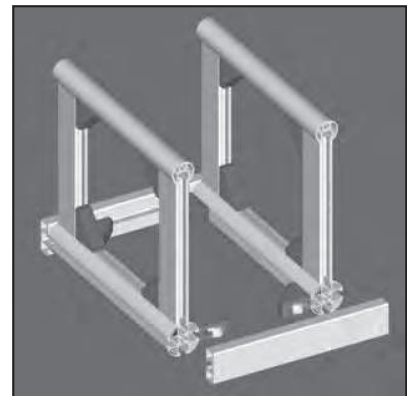
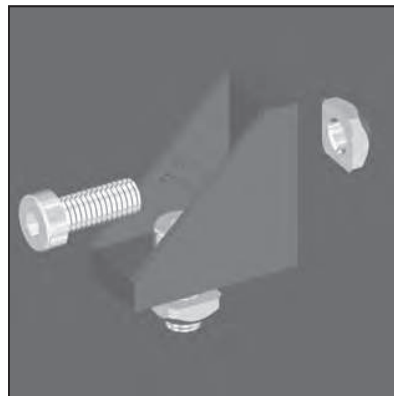
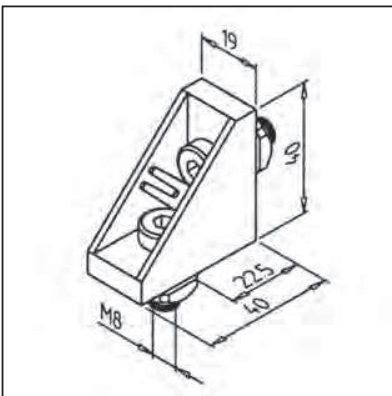
- Constructions made from profile series 16 or 23, subsequent insertion of profiles or components into existing constructions
- Fixing of panels, table-tops
- Reinforcement of constructions made from profile series 16 or 23

ASSEMBLY

- Use fastening kit
- Recommended locking torque: 8 Nm
- Suitable end cap MW 16 GD-Z, grey: **part no. 22.1138/1**

ANGLE 19 GD-Z

part no. 21.2078/0



TECHN. DATA / ITEMS SUPPLIED

- Aluminium GD, powder coated, grey
- Fastening kit
- **Conductive version part no. 21.2078/6**
- Weight 0,055 kg

APPLICATIONS

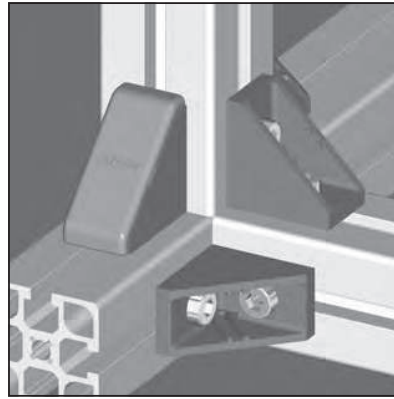
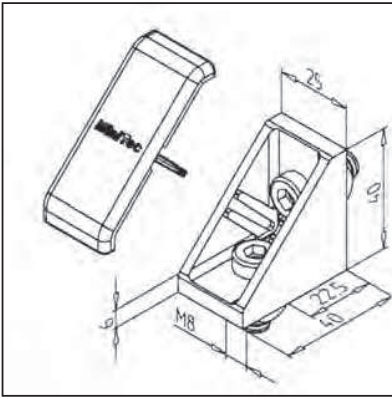
- Connection of profiles 19 and 32
- For subsequent insertion of profiles into existing constructions, relocatable in direction of the groove
- Fixing of bearing surfaces

ASSEMBLY

- Use fastening kit
- In case of mounting into vertical profiles, use of square-nut M8 with position-fixing, **part no. 21.1351/2**
- Suitable end-cap MW 19 GD-Z, grey **part no. 22.1139/1**
- Recommended locking torque: 20 Nm

ANGLE 25 GD-Z

part no. 21.0969/0



TECHN. DATA / ITEMS SUPPLIED

- Aluminium GD, powder coated, grey
- Fastening kit
- Removable centering tabs
- **Conductive version part no. 21.0969/6**
- Weight 0,066 kg

APPLICATIONS

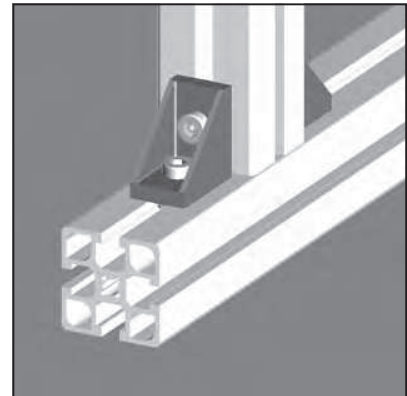
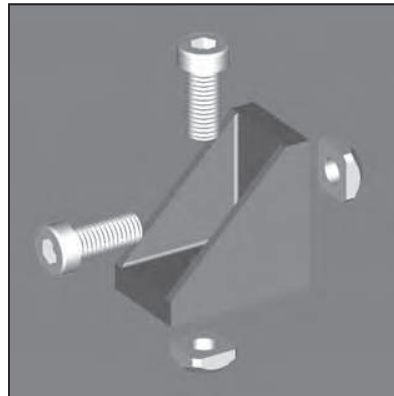
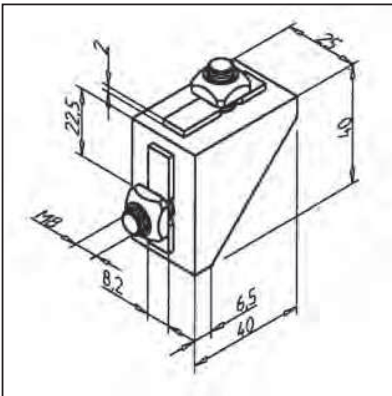
- General constructions, particularly for subsequent insertion of profiles into existing constructions
- Fixing of panel elements, table tops
- Strengthening of profile constructions

ASSEMBLY

- Use fastening kit
- If non-aligning grooves, break centering tabs with pliers
- For subsequent mounting into vertical profiles use square nut M8 with position-fixing **part no. 21.1351/2**
- End cap MW 25 GD-Z **part no. 22.0997/1**
- Recommended locking torque: 20 Nm

ANGLE 25 S

part no. 21.1134/0



TECHN. DATA / ITEMS SUPPLIED

- Aluminium GD, powder coated, grey
- Locking device against torsion
- Fastening kit
- **Conductive version part no. 21.1134/6**
- Weight 0,066 kg

APPLICATIONS

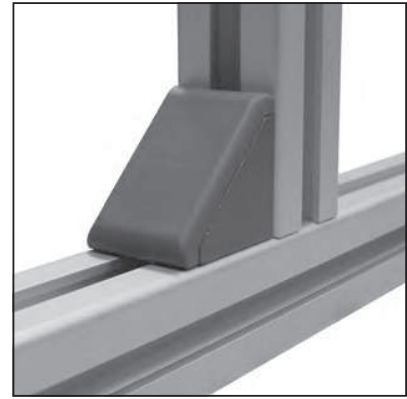
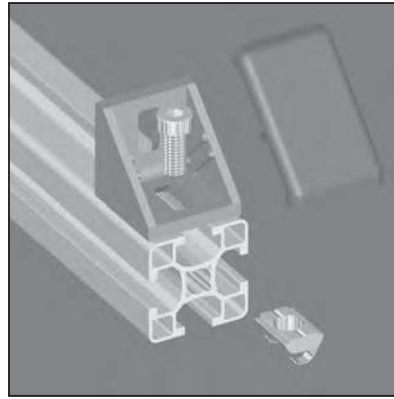
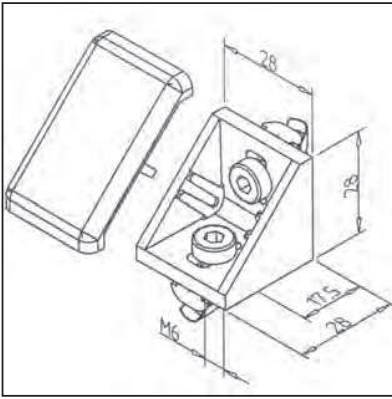
- General constructions, particularly for subsequent insertion of profiles into existing constructions
- Strengthening of profile connections

ASSEMBLY

- Use fastening kit
- For mounting into vertical profile use square nut M8 with position-fixing **part no. 21.1351/2**
- Recommended locking torque 20 Nm

ANGLE 30 GD

part no. 21.1347/0



TECHN. DATA / ITEMS SUPPLIED

- Aluminium GD, powder coated, grey
- Fastening kit
- **Conductive version part no. 21.1347/6**
- Weight 0,053 kg

APPLICATIONS

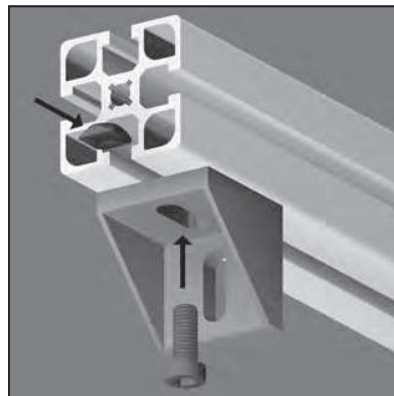
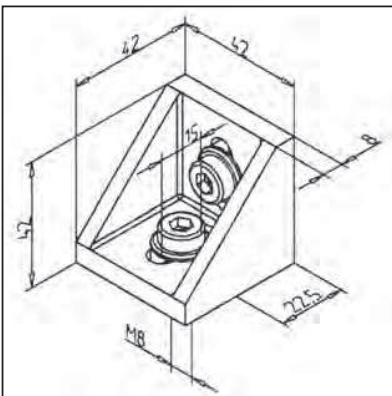
- Constructions made from profile series 30, subsequent insertion of profiles or components into existing constructions
- Fixing of panels, table-tops
- Reinforcement of constructions made from profiles series 30

ASSEMBLY

- Use fastening kit
- Recommended locking torque: 8 Nm
- Suitable end cap MW 30 GD-Z, grey: **part no. 22.1026/1**

ANGLE 45 GD

part no. 21.1133/0



TECHN. DATA / ITEMS SUPPLIED

- Aluminium GD, powder coated, grey
- Fastening kit
- **Conductive version part no. 21.1133/6**
- Weight 0,114 kg

APPLICATIONS

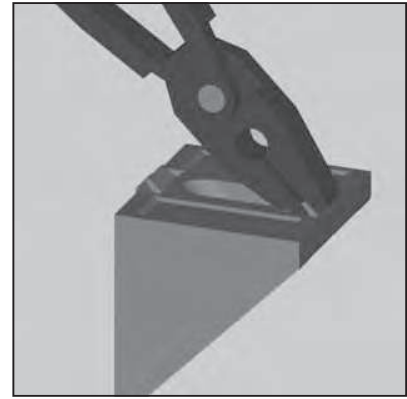
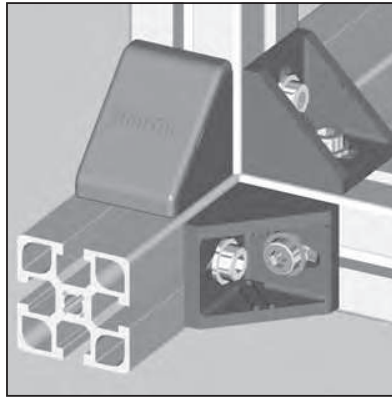
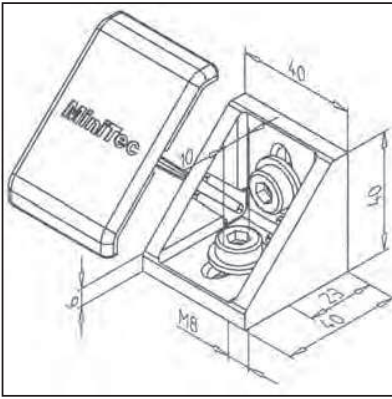
- General constructions, particularly for subsequent insertion of profiles into existing constructions
- Fixing of panel elements, table tops
- Strengthening of profile constructions

ASSEMBLY

- Use fastening kit
- For subsequent mounting into vertical profiles use square nut M8 with position-fixing **part no. 21.1351/2**
- Hammer head screw **part no. 21.1370/0** can be used
- Recommended locking torque 20 Nm

ANGLE 45 GD-Z

part no. 21.1349/0



TECHN. DATA / ITEMS SUPPLIED

- Aluminium GD, powder coated, grey
- Fastening kit
- Removable centering tabs
- Conductive version **part no. 21.1349/8**
- Weight 0,086 kg

APPLICATIONS

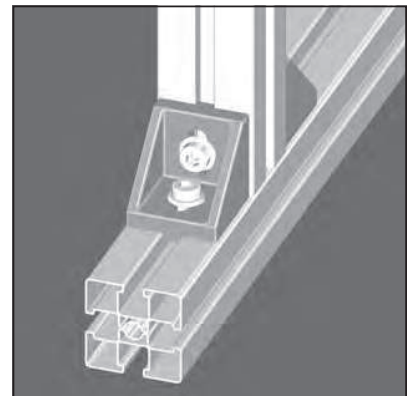
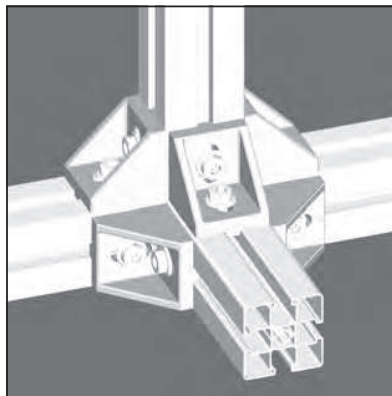
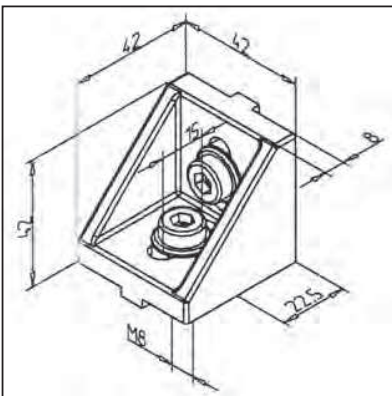
- General constructions, particularly for subsequent insertion of profiles into existing constructions
- Fixing of panel elements, table tops
- Strengthening of profile constructions

ASSEMBLY

- Use fastening kit
- If non-aligning grooves, break centering tabs with pliers
- For subsequent mounting into vertical profiles use square nut with position-fixing **part no. 21.1351/2**
- Use hammer head screw **part no. 21.1370/0**
- Recommended locking torque: 20 Nm
- End cap MW 45 GD-Z **part no. 22.1024/1**

ANGLE 45 VA

part no. 21.0007/0



TECHN. DATA / ITEMS SUPPLIED

- Material: WN DIN 1.4301 X5 CR NI 18 - 10, SUS 304, stainless steel
- Fastening kit
- Weight 0,255 kg

APPLICATIONS

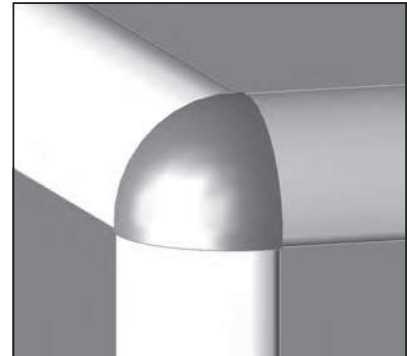
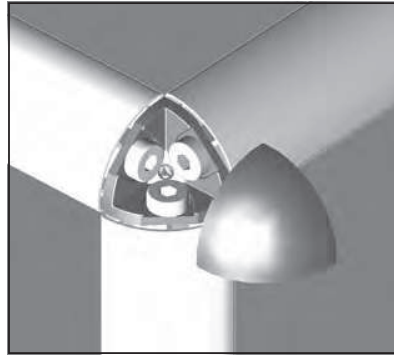
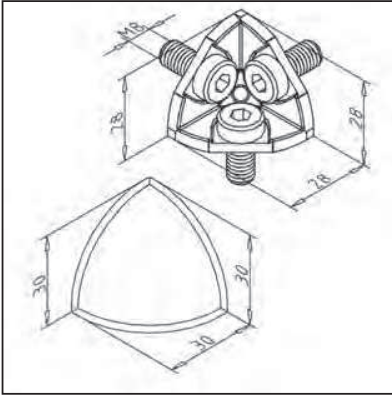
- General constructions, particularly suitable for subsequent insertion of profiles into existing constructions
- Strengthening of profile constructions

ASSEMBLY

- Use fastening kit
- For subsequent mounting into vertical profiles use square nut M8 with position fixing **part no. 21.1351/4**
- Recommended locking torque 20 Nm

ANGLE 30 R 90°

part no. 21.2109/0



TECHN. DATA / ITEMS SUPPLIED

- Aluminium GD, nature
- End cap MW 30 R 90°, grey, **part no. 22.1143/1**
- Fastening kit
- Weight 0,043 kg

APPLICATIONS

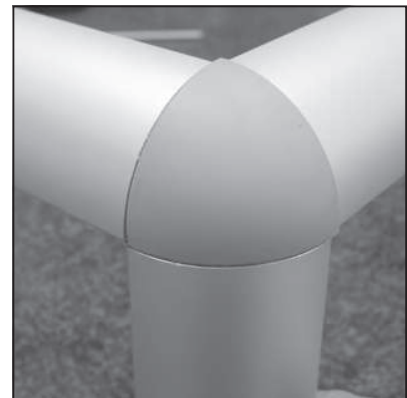
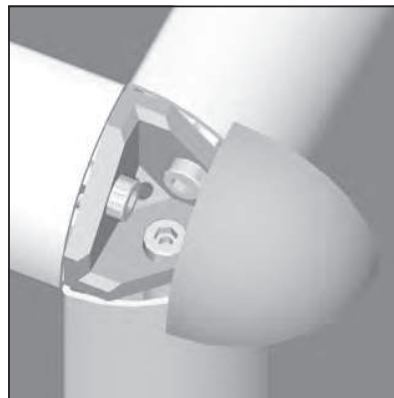
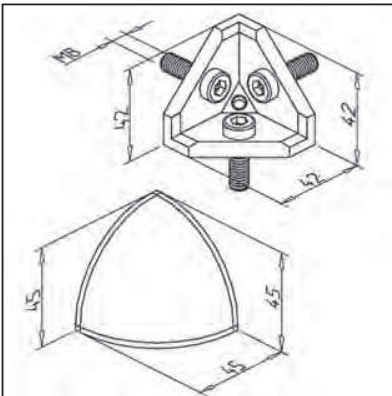
- Corner fastening of profiles 30 R 90°
- Constructions for show cases, tables etc.

ASSEMBLY

- With mounting material from scope of supply in central drilling of the profile
- Clip on end cap

ANGLE 45 R 90°

part no. 21.1710/1



TECHN. DATA / ITEMS SUPPLIED

- Aluminium GD, nature
- End cap MW 45 R 90°, grey, **part no. 22.1033/1**
- Fastening kit
- Weight 0,098 kg

APPLICATIONS

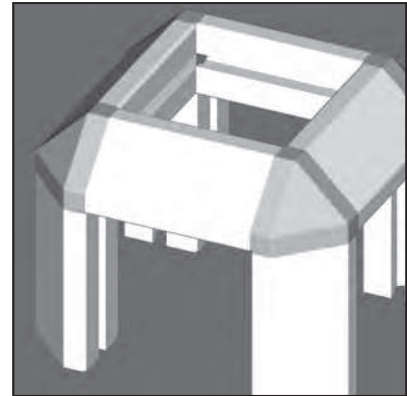
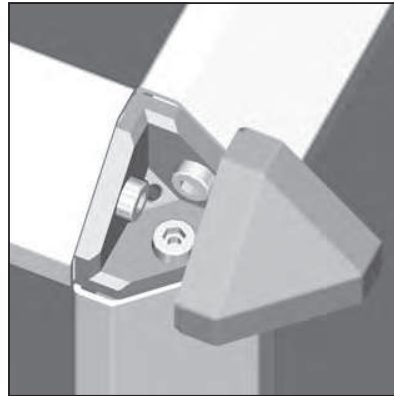
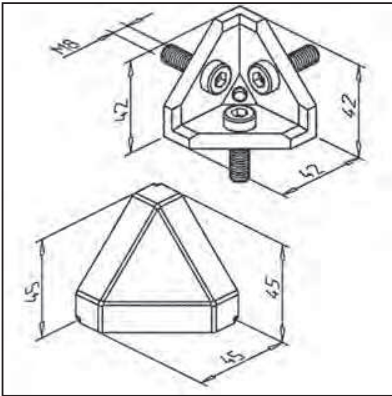
- Corner fastening of profiles 45 R 90°
- Constructions for show cases, tables etc.

ASSEMBLY

- With mounting material from scope of supply in central drilling of the profile
- Clip into the end cap

ANGLE 45°

part no. 21.1708/1



TECHN. DATA / ITEMS SUPPLIED

- Aluminium GD, nature
- End cap 45°/3, grey
- Fastening kit
- Weight 0,107 kg

APPLICATIONS

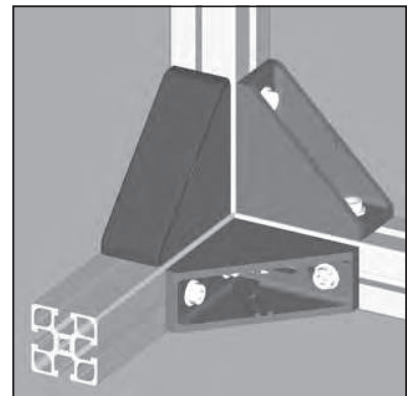
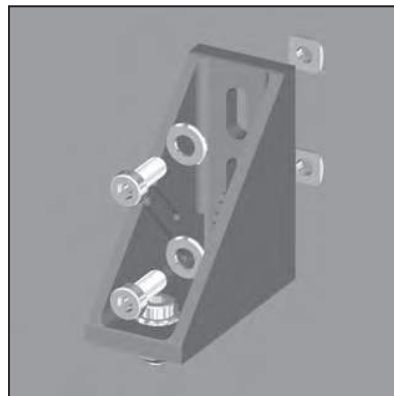
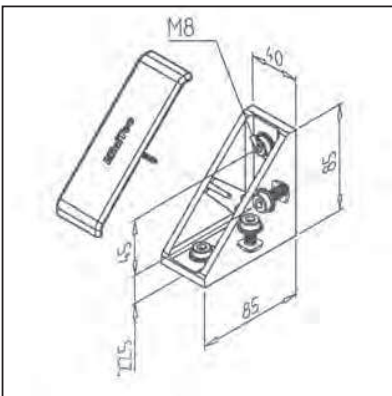
- Corner fastening of profiles 45 / 45°
- Constructions for show cases, tables etc.

ASSEMBLY

- With mounting material from scope of supply in central drilling of the profile
- Clip into the end cap

ANGLE 45 X 90 GD-Z

part no. 21.1397/0



TECHN. DATA / ITEMS SUPPLIED

- Aluminium GD, powder coated, grey
- Fastening kit
- Weight 0,281 kg
- **Conductive version part no. 21.1397/6**

APPLICATIONS

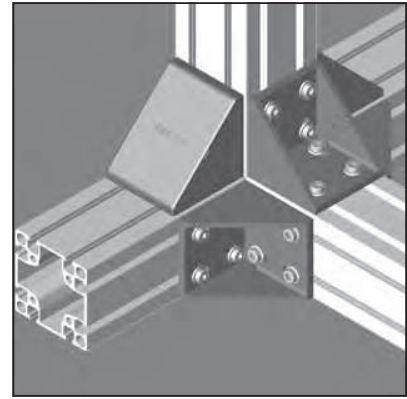
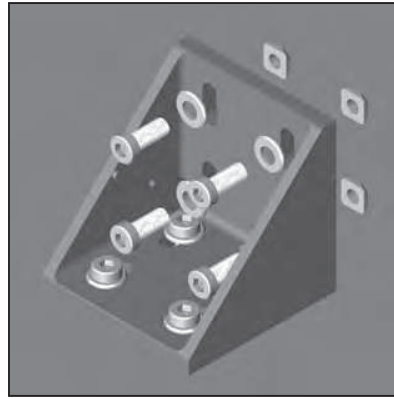
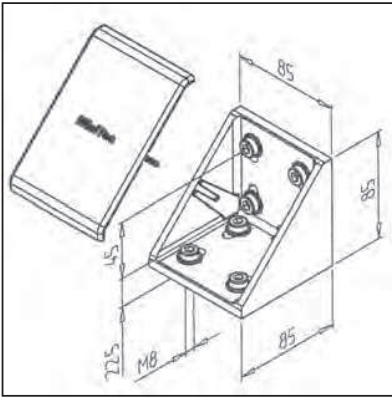
- General constructions, particularly for subsequent insertion of profiles into existing constructions
- Fixing of panel elements, table tops
- Strengthening of profile constructions

ASSEMBLY

- Use fastening kit
- For mounting into vertical profile use square nut M8 with position-fixing **part no. 21.1351/2**
- Recommended locking torque: 20 Nm
- Use hammer head screw **part no. 21.1370/0**
- Suitable end cap MW 45 x 90 GD-Z **part no. 22.0998/1**

ANGLE 90 GD-Z

part no. 21.0978/0



TECHN. DATA / ITEMS SUPPLIED

- Aluminium GD, powder coated, grey
- Fastening kit
- Weight 0,497 kg
- **Conductive version part no. 21.0978/6**

APPLICATIONS

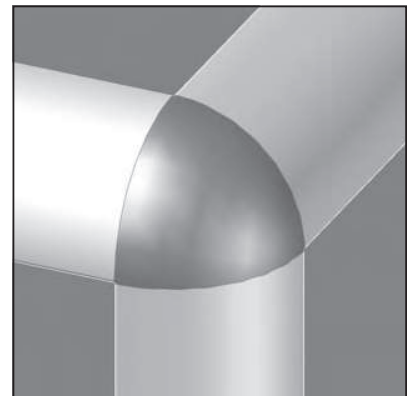
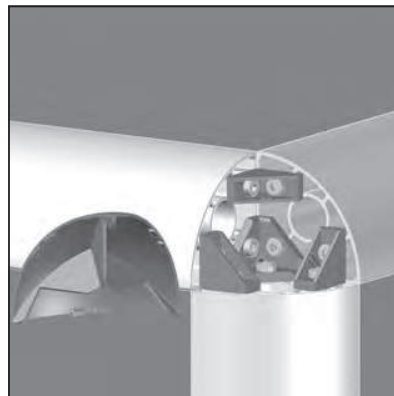
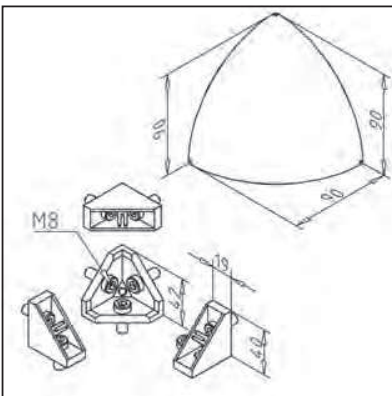
- For profiles 90 and 180
- General constructions, particularly for subsequent insertion of profiles into existing constructions
- Strengthening of all profile connections

ASSEMBLY

- Use fastening kit
- For subsequent mounting into vertical profiles use square nut M8 with position-fixing **part no. 21.1351/2**
- Hammer head screw can be used
- Recommended locking torque: 20 Nm
- Suitable end cap MW 90 GD-Z **part no. 22.0999/1**

CORNER CONNECTION 90 R 90°

part no. 21.2199/0



TECHN. DATA / ITEMS SUPPLIED

- Aluminium GD
- End cap MW 90 R 90°, grey, **part no. 22.0980/1**
- Angle 45°, **part no. 21.1708/2**
- Angle 19 GD-Z, **part no. 21.2078/2**
- Fastening kit
- Weight 0,267 kg

APPLICATIONS

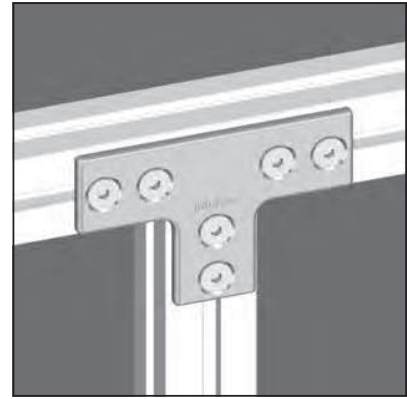
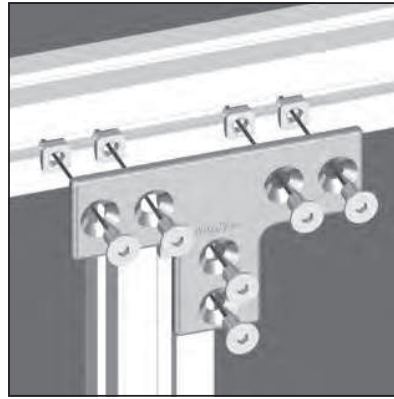
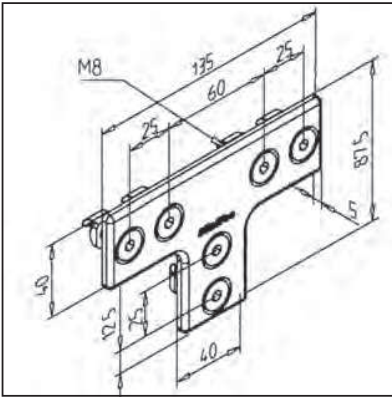
- Corner connections of profiles 90 R 90°
- Constructions for show cases, tables etc.

ASSEMBLY

- Fasten with screws from the fastening kit in central bore of the profile
- Clip into the end cap

T-SHEET VA

part no. 21.0019/0



TECHN. DATA / ITEMS SUPPLIED

- Sheet stainless steel

- Fastening kit

- Weight 0,259 kg

APPLICATIONS

- Strengthening of profile constructions

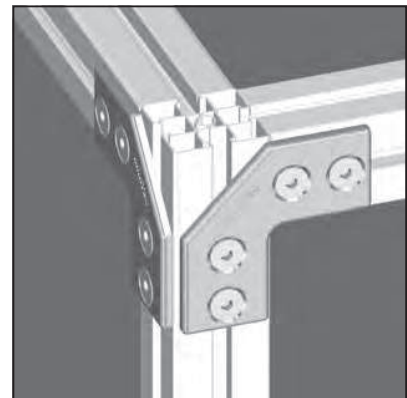
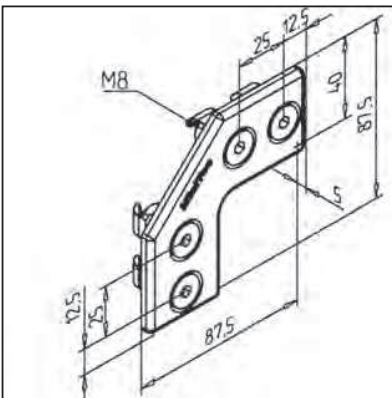
ASSEMBLY

- Use fastening kit

- Use power-lock fasteners if tractive forces appear

ANGLE-SHEET VA

part no. 21.0018/0



TECHN. DATA / ITEMS SUPPLIED

- Sheet stainless steel

- Fastening kit

- Weight 0,163 kg

APPLICATIONS

- Strengthening of profile constructions

- Also suitable for cross joints (double application)

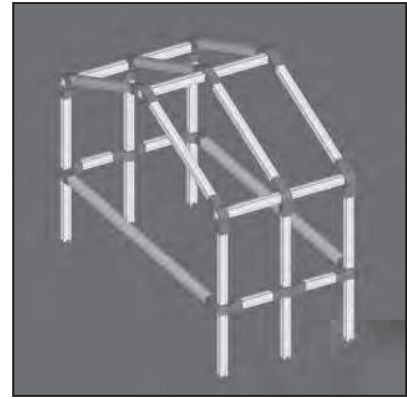
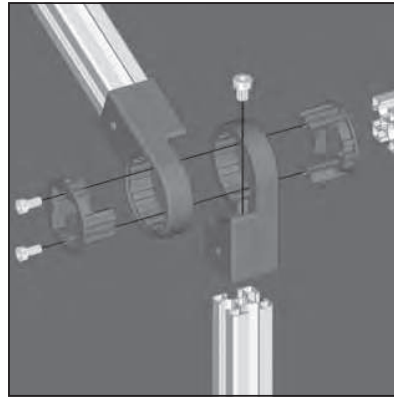
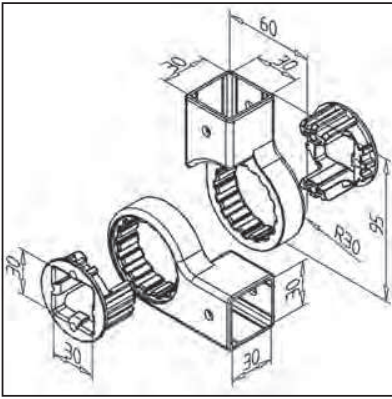
ASSEMBLY

- Use fastening kit

- Use power-lock fasteners if tractive forces appear

MULTI CONNECTOR 30

part no. 22.1140/0



TECHN. DATA / ITEMS SUPPLIED

- ABS, grey
- Fastening kit
- Weight 0,135 kg

APPLICATIONS

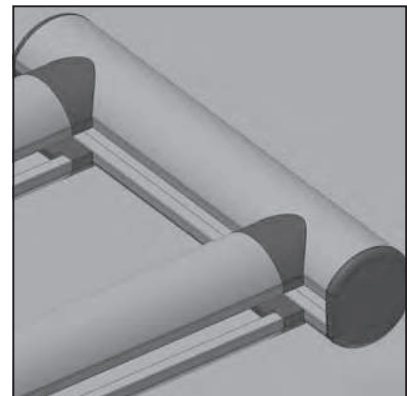
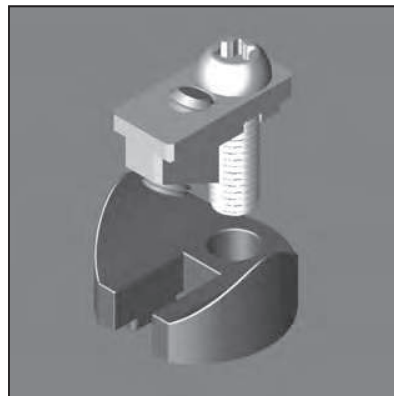
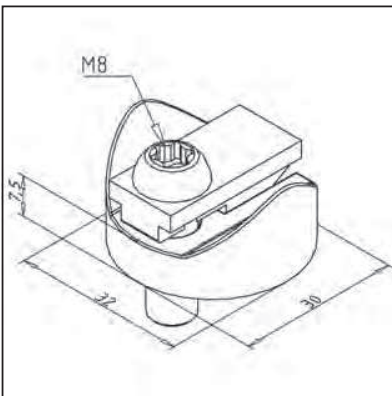
- Easy connection for profiles
- Angle adjustable in 22,5° raster

ASSEMBLY

- Attach swivel arm on face side of profile
- Insert socket from the side
- Insert other profile into socket and position it
- Secure it with 2 hex socket cap screws against movement

ADAPTER G32 / G32

part no. 21.0954/0



TECHN. DATA / ITEMS SUPPLIED

- Aluminium GD, powder coated, grey
- Fastening kit
- Weight 0,041 kg

APPLICATIONS

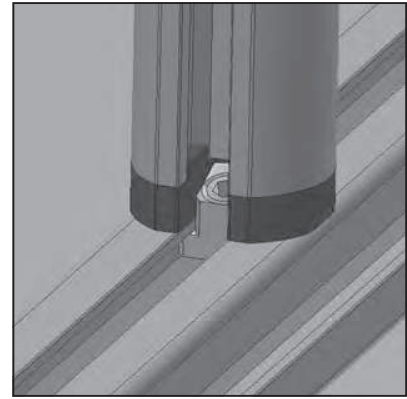
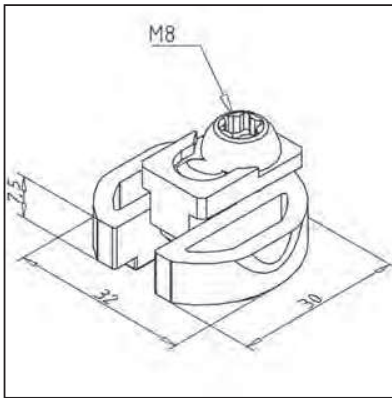
- For connection of handle profile 32 with handle profile 32

ASSEMBLY

- Screw on profile face and fasten with power-lock fastener
- Push in cross direction profile and attach it to the desired location

ADAPTER G32 / 30 X 30

part no. 21.0955/0

**TECHN. DATA / ITEMS SUPPLIED**

- Aluminium GD, powder coated, grey
- Fastening kit
- Weight 0,032 kg

APPLICATIONS

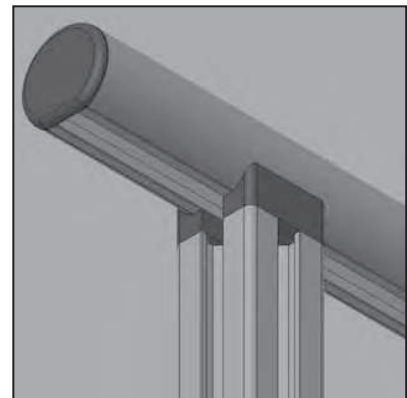
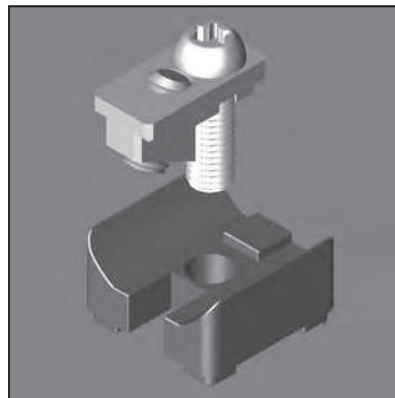
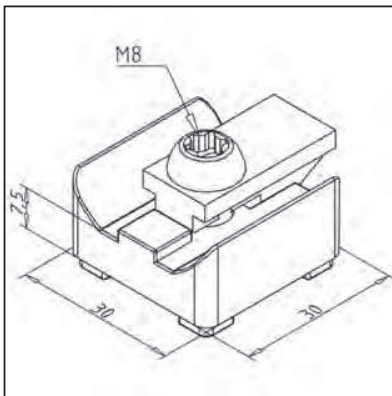
- For connection of handle profile 32 with profile 30 x 30

ASSEMBLY

- Screw on profile face and fasten with power-lock fastener
- Push in cross direction profile and attach it to the desired location

ADAPTER 30 X 30 / G32

part no. 21.0953/0

**TECHN. DATA / ITEMS SUPPLIED**

- Aluminium GD, powder coated, grey
- Fastening kit
- Weight 0,046 kg

APPLICATIONS

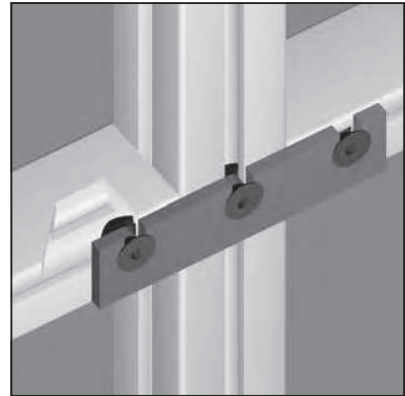
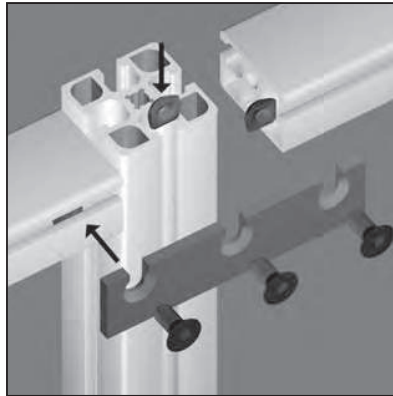
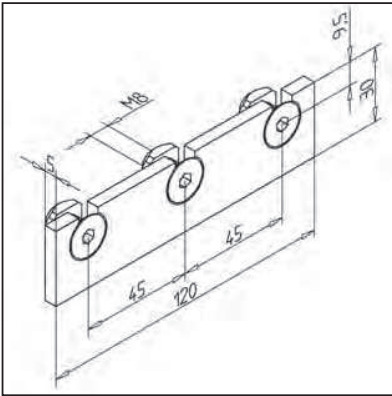
- For connection of profile 30 x 30 with handle profile 32

ASSEMBLY

- Screw on profile face and fasten with power-lock fastener
- Push in cross direction profile and attach it to the desired location

CONNECTING BAR

part no. 21.1113/0



TECHN. DATA / ITEMS SUPPLIED

- Bar steel, zinc plated
- Fastening kit
- Weight 0,156 kg

APPLICATIONS

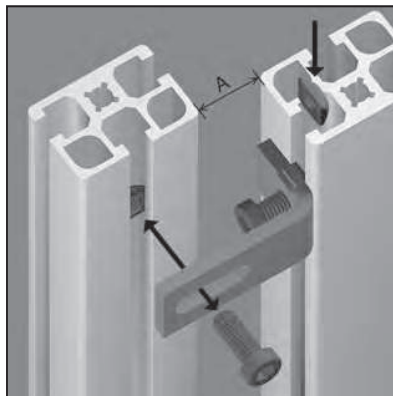
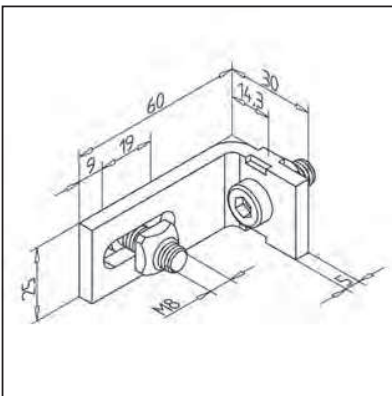
- Connection of different profiles
- Subsequent insertion of profiles into existing constructions

ASSEMBLY

- Use fastening kit
- No processing required

GUARD UNIT FIXING ANGLE 45 ST

part no. 21.1404/0



TECHN. DATA / ITEMS SUPPLIED

- Steel, zinc plated
- Fastening kit
- Weight 0,103 kg

APPLICATIONS

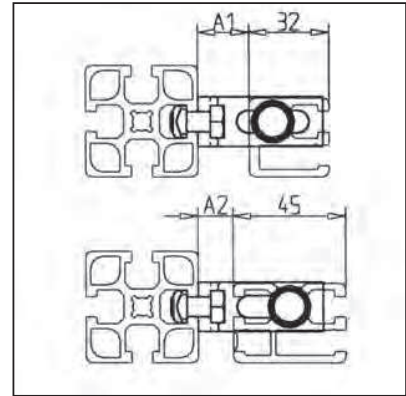
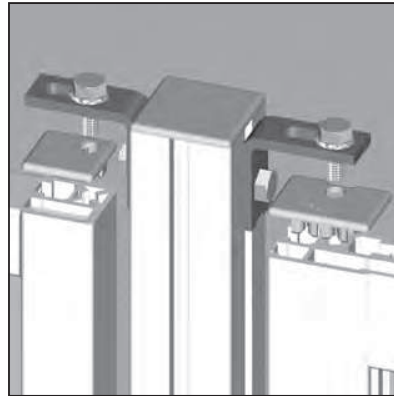
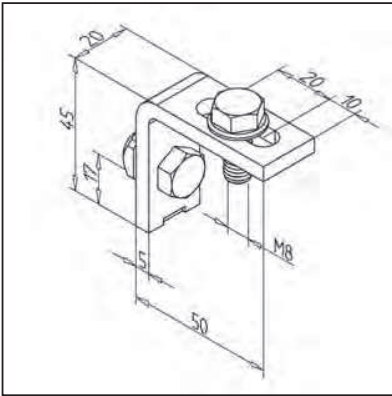
- Fixing of guards made from profile 45 x 32
- Usable in frames made from any profile
- Flush mounting of element

ASSEMBLY

- Use fastening kit
- No processing required
- First fix the angle to vertical profile, then screw guard unit from rear with angle
- A = 10 mm - 28 mm

GUARD UNIT FIXING ANGLE 19

part no. 21.1399/0



TECHN. DATA / ITEMS SUPPLIED

- Steel, zinc plated
- Fastening kit
- Weight 0,089 kg

APPLICATIONS

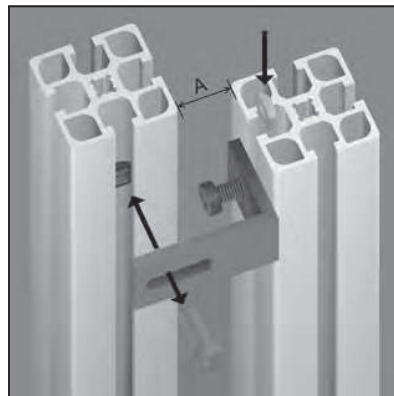
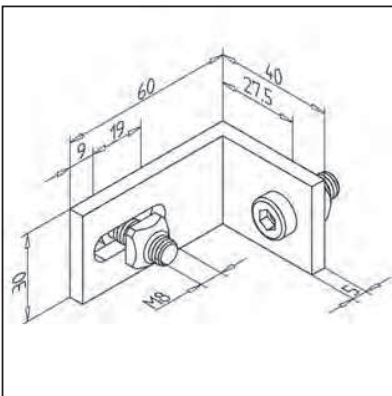
- Fixing of guards made from clamp-profiles 32 x 32 or 45 x 32 or from all other standard profiles
- Fixing of guards at any angle
- For clamp profile 32 x 32 use end cap part no. 22.1032/3
- For clamp profile 45 x 32 use end cap part no. 22.1046/3

ASSEMBLY

- Drill thread M8 x 20 in both ends of vertical profiles of the guard
- Insert guard in angles, adjust position of the angles and fix it (wrench 13)
- Fix guard with screws of fastening kit
- Alternatively: use snap bolts 25 part no. 21.1758/0 in lower threads of the guard for very quick assembly, fixing with upper screws only
- A1 = 10,5 mm - 30,5 mm
- A2 = 10,5 mm - 17,5 mm

GUARD UNIT FIXING ANGLE 45 AL

part no. 21.1407/0



TECHN. DATA / ITEMS SUPPLIED

- Aluminium, natural anodized
- Fastening kit
- Weight 0,067 kg

APPLICATIONS

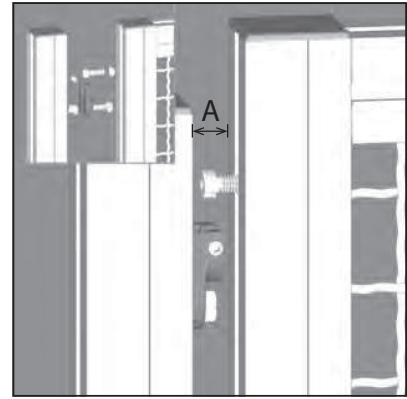
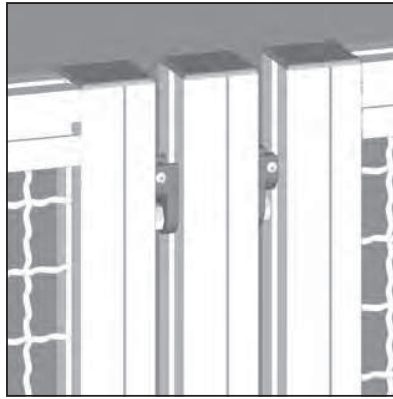
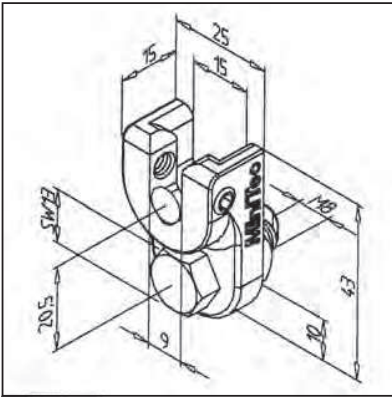
- Fixing of frame-elements made from profile 45 x 45
- Usable in frames made from any profile
- Flush mounting of element

ASSEMBLY

- Use fastening kit
- No processing required
- First fix the angle to vertical profile, then screw guard unit from rear with angle
- A = 10 mm - 28 mm

GUARD UNIT FIXING ANGLE GD-K

part no. 21.0008/0



TECHN. DATA / ITEMS SUPPLIED

- Aluminium GD, powder coated, grey
- Fastening kit
- Weight 0,039 kg

APPLICATIONS

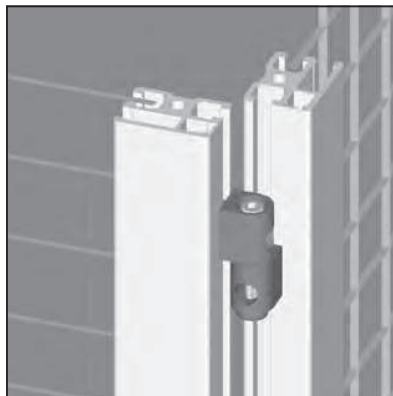
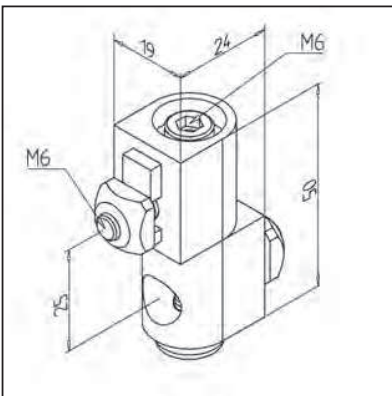
- Guards from all profiles
- Movable flaps
- It is also possible to mount the guards at the front when fitting the suspensions to the front of the post

ASSEMBLY

- Screw the guard suspension to the pillars
- Attach M8 x 25 cheese-head screws to the protective panel
- Hang the guard in place, and tighten the set screw using an Allen key from the rear
- A = 16 mm ± 0.75
- **Guard cannot be removed from outside**

GUARD UNIT WITH ADJUSTABLE FIXING ANGLE

part no. 21.1403/0



TECHN. DATA / ITEMS SUPPLIED

- Aluminium GD, powder coated, grey
- Fastening kit
- Weight 0,114 kg

APPLICATIONS

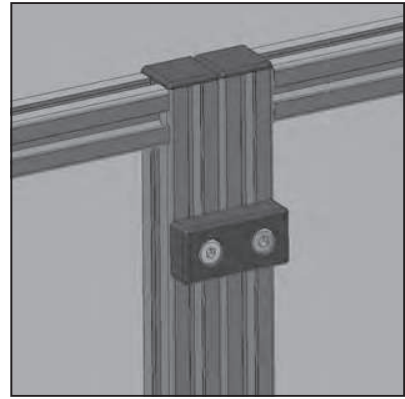
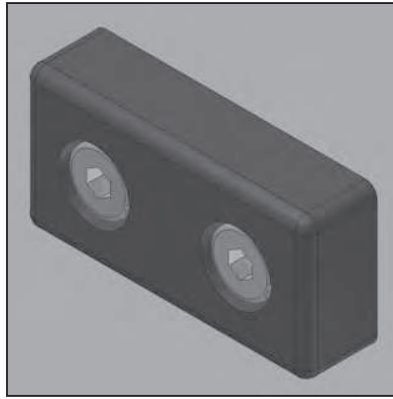
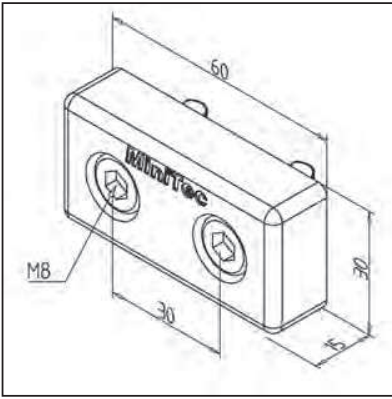
- Connection of profiles at any angle
- Erection of guard units at any angle

ASSEMBLY

- Mount the lower fixing half on the post and align it
- Mount the upper half on the guard unit and insert the guard unit
- Insert the cylinder head screw and tighten it with key 4 A/F. The inserted hexagon nut in the lower fixing half is secured against torsion
- See page 73

CONNECTING PLATE 30 X 60

part no. 21.2113/0



TECHN. DATA / ITEMS SUPPLIED

- Aluminium GD, powder coated, grey
- Fastening kit
- Weight 0,085 kg

APPLICATIONS

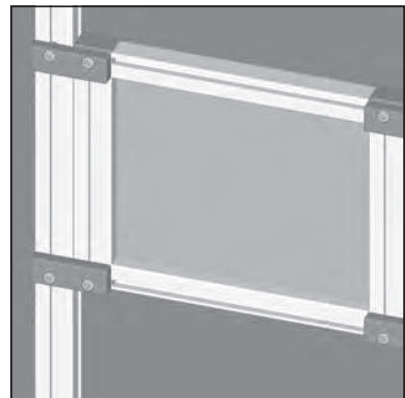
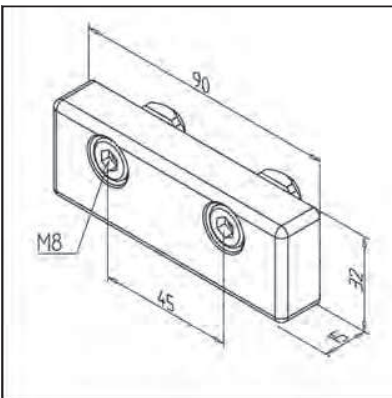
- Connection of two guards without gap
- Strengthening of guard units
- Connection of premounted units or modules

ASSEMBLY

- Use fastening kit; fasten on profile groove of save guard and pile

CONNECTING PLATE 90 X 32

part no. 21.1346/0



TECHN. DATA / ITEMS SUPPLIED

- Aluminium GD, powder coated, grey
- Fastening kit
- Weight 0,135 kg

APPLICATIONS

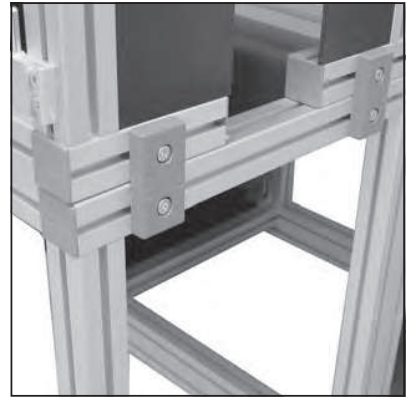
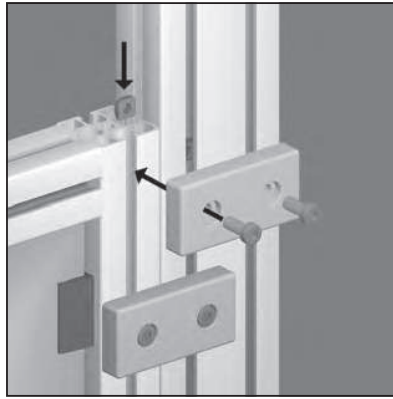
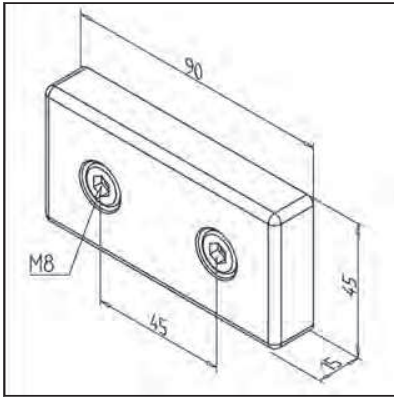
- Connection of two guards without gap
- Strengthening of guard units
- Connection of premounted units or modules

ASSEMBLY

- Use fastening kit

CONNECTING PLATE 45 X 90

part no. 21.1472/0



TECHN. DATA / ITEMS SUPPLIED

- Aluminium GD, powder coated, grey
- Fastening kit
- Weight 0,181 kg

APPLICATIONS

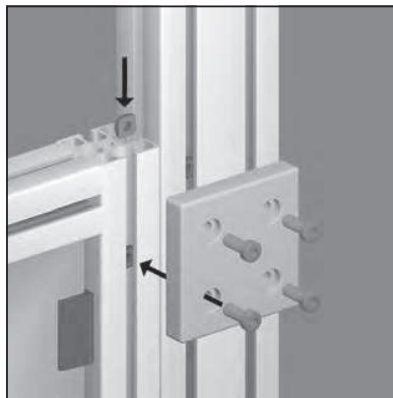
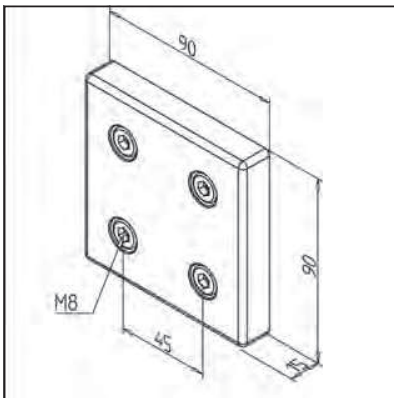
- Connection of guards without gap
- Strengthening of guard units
- Connection of premounted units or modules

ASSEMBLY

- Use fastening kit

CONNECTING PLATE 90 X 90

part no. 21.1473/0



TECHN. DATA / ITEMS SUPPLIED

- Aluminium GD, powder coated, grey
- Fastening kit
- Weight 0,366 kg

APPLICATIONS

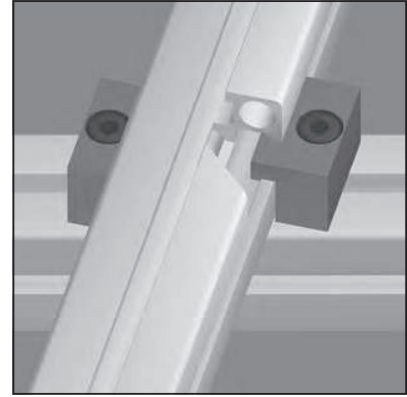
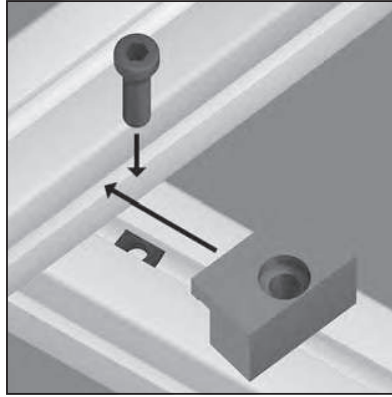
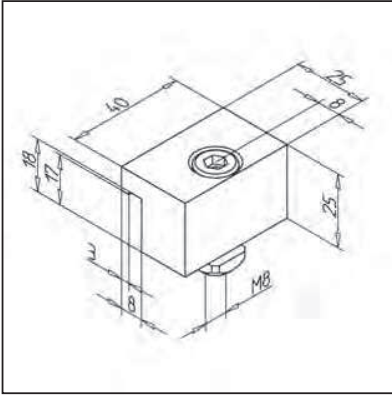
- Connection of guards without gap
- Strengthening of guard units
- Connection of premounted units or modules

ASSEMBLY

- Use fastening kit

CLAMPING CLAW

part no. 21.1027/0

**TECHN. DATA / ITEMS SUPPLIED**

- Aluminium anodized
- Fastening kit
- Weight 0,063 kg

APPLICATIONS

- Parallel connection of profiles at various angles

ASSEMBLY

- Use fastening kit
- No processing required

**Profilex s.a.**

6b, Z.I. In den Allern
 L-9911 Troisvierges
 Phone LU : +352 99 89 06
 Phone BE : +32 28 88 16 29
 Fax : +352 26 95 73 73

info@profilex-systems.com
www.profilex-systems.com